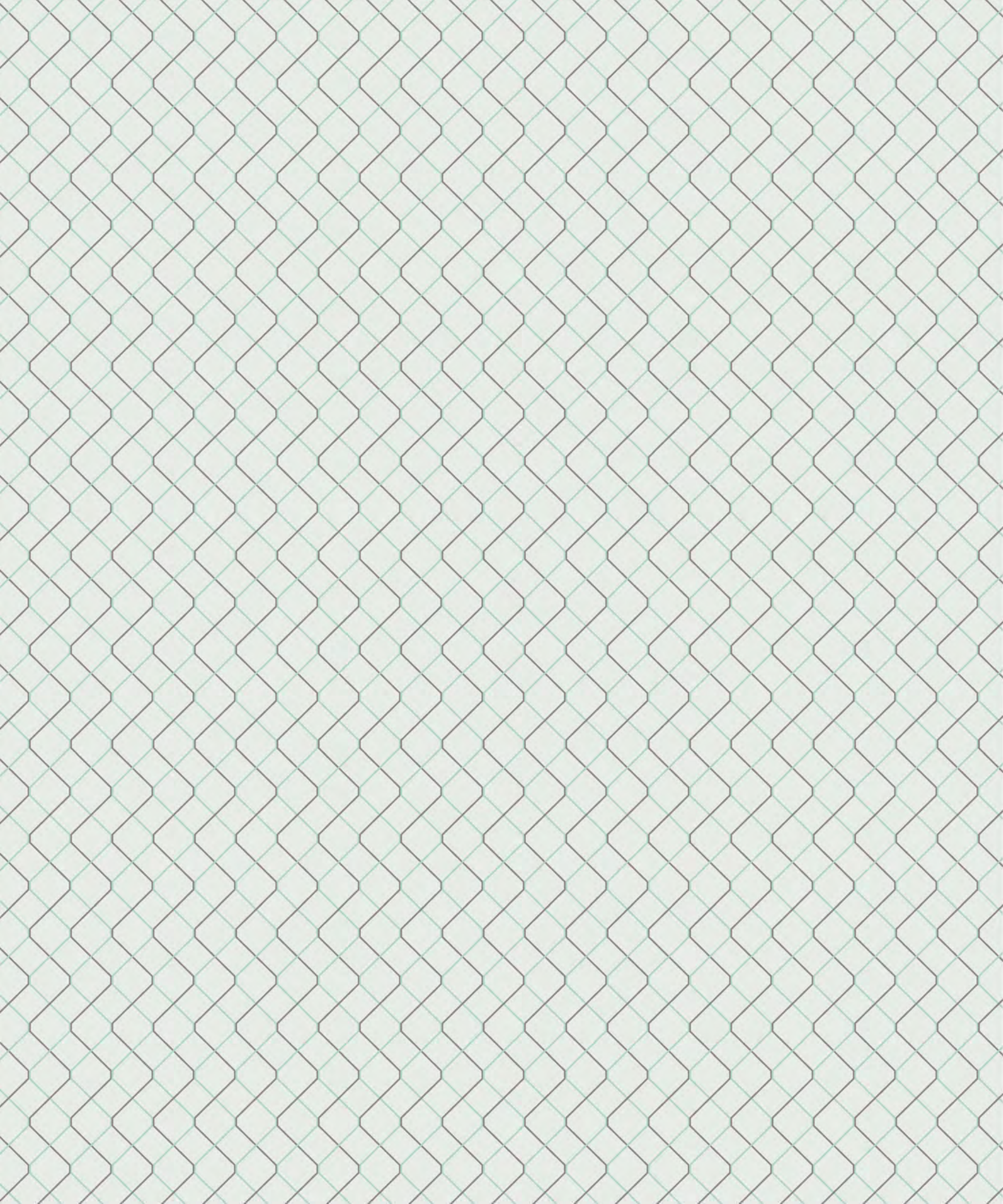


Ad  
A

COLLECTION



Sevensedie



## THE ADA CAPSULE

We deliberately start from a neutral definition such as that of a dictionary: “modern is what is designed and conceived with current methods to meet the needs and tastes of our times”.

Sevensedie has always been all of this: a cutting-edge company that exports products all over the world, riding trends with products that have an absolute distinctive design, created to meet the multi-cultural needs of our modern days.

The Modern collection stems from the demand of a world in which sevensedie has been moving for some time, namely the world of luxury furniture.

The trend of recent years in this exclusive sector shows a progressive lack of interest towards classic furniture, in antithesis we have perceived a strong demand for products with more sober and essential shapes.

Sevensedie, perfectly in line with the trends of the moment and with its own philosophy, proposes this new collection with clean lines but not lacking in details, characterized by a careful research of selected finishes and essences, by the skilful use of metal details

and fabrics and absolutely current and exclusive manufacturing processes.

The Ada capsule, the beating heart of the Modern collection, is the result of an in-depth research into furnishings from the 1950s and 1960s, a condensate of european and american design born after the second world war.

The materials, the colours and the study of the details of yesterday’s furniture, together with the comfort needs of today’s society come together in this line of absolute contemporary products, with gentle lines and a subtle vintage flavour.

The sleek shape of the armrest of the mystirio sofa, the rounded leg of the celine armchair, the recessed top of the theo coffee tables, the curvilinear shapes of the Ada sideboard, the decorated back of the moon bookcase immediately highlight how all the products have been conceived and designed simultaneously and that geometries and stylistic details bind all elements to each other in an essential way: this choral, silent dialogue is the real pulsating energy of the Ada capsule.

## THE SOUL OF OUR MODERN COLLECTION

Modern (adjective): existing in the present or a recent time, or using or based on recently developed ideas, methods, or styles.

Ad  
A

COLLECTION

## Index

—

LIVING	7
DINING	47
BEDROOM	91
RECAP	115





Living

—

## METROPOLITAN CLASSIC

An apartment with a touch of classic style, the ideal refuge from the metropolitan chaos. The furniture in the living area with distinctive elegant lines combines with the dark boiserie. The light of the city enters the room through the large window, highlighting objects and precious details.







**A CORNER FOR PRIVACY AND INTIMACY**

A small corner of relaxation away from the city's swirling rhythm: the Noemi armchair is ready to welcome you with its sober elegance for a moment of your own in the company of your latest book and your favorite piece of music.





Living

**ESSENTIAL GEOMETRY FOR EVERY  
STYLE**

Mystirio sofa is the perfect fusion between an essential geometric shape, ideal for all styles of homes, and the refinement of details: from the buttoned backrest cushions, to the choice of precious upholstery materials, to the legs in anthracite finish raising the seat and conferring to the sofa a distinctive aesthetic lightness.

















Living

—

**ESSENTIAL ELEGANCE**

A living room with a defined modern look, wide and full of light entering the room from the large perimeter windows. An ideal context in which the Mystirio compositional program expresses at best its potentials.







**DESIGN FLEXIBILITY**

The Mystirio sofa becomes a modular program without losing its elegance and harmony: here combined with a pouf that allows you to rest comfortably in moments of relaxation.









## THE EFFECTIVENESS OF MODULARITY

Moon bookcase combines the function of containment in several configurations with the search for an aesthetic that makes it unique and immediately recognizable. The rhombus decoration in Canaletto walnut on the bookcase back panel becomes a modular texture that strongly characterizes the wall on which is positioned.

























Living

—

**WELCOMING SOBRIETY**

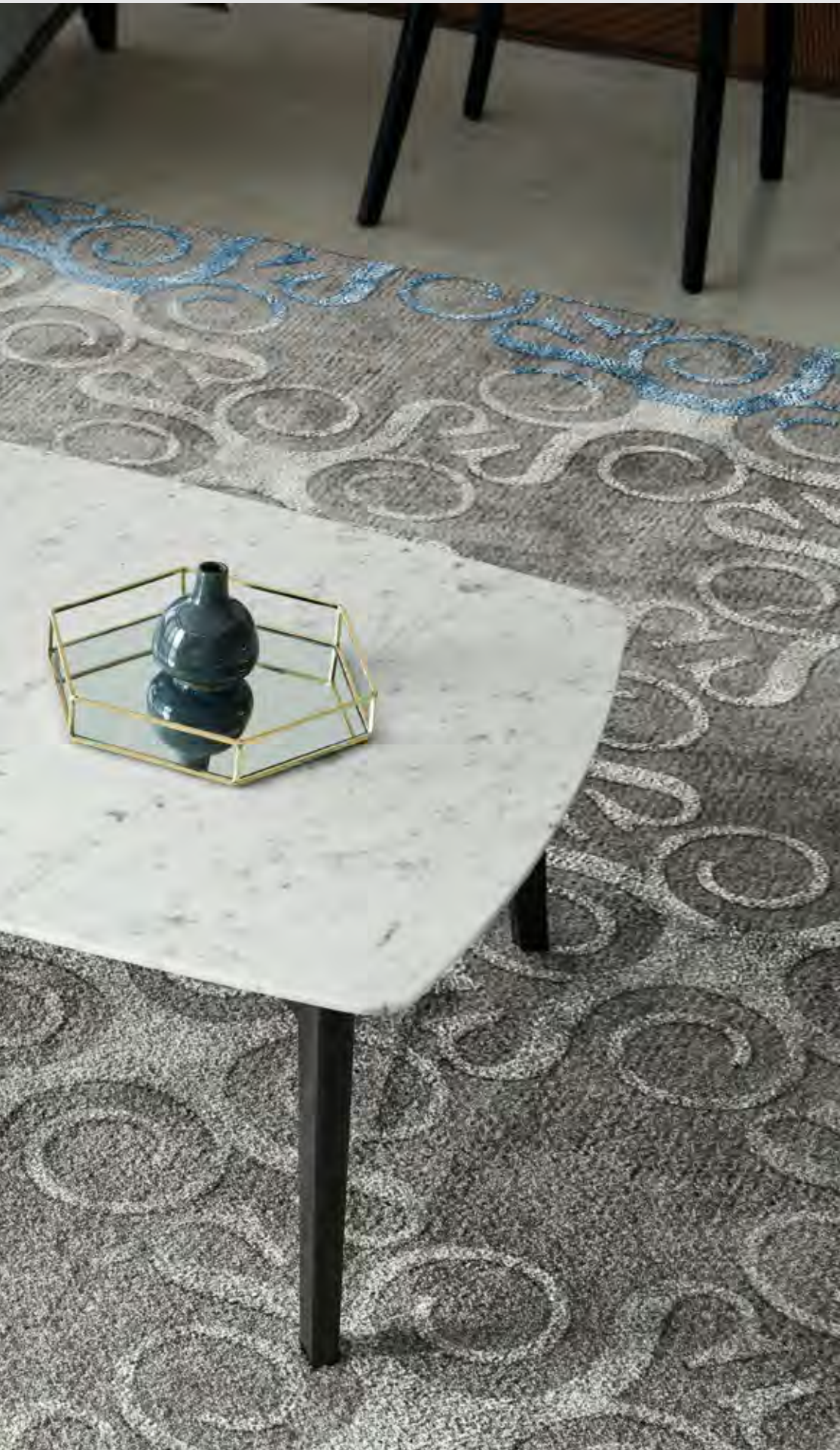
A penthouse in the heart of a northern city, the cold light of a wintery day penetrates through the high windows and illuminates the large wall decorated with Armilla tiles in the warm tone of coffee and of the lead blue

















### CONTEMPORARY VINTAGE

The Celine project was born after an in-depth research on furnishings from the 1950s-1960s: the materials, the colors and the study of the details of the furniture from the past, together with the comfort needs of the modern user, come together in this series of absolutely contemporary upholstery, with a gentle line and a subtle vintage flavor.







**DESIRED SIMPLICITY**

The Theo program is the ideal complement to the Celine sofa and armchair; the aesthetic purity of the product is actually a balanced mix of complex details: from the recessed top profile, to the leg section design, to the chromed cylinder that detaches the top from the legs without dividing it. Theo coffee tables and lamp tables have been designed in different shapes and heights to be able to create always new and customizable compositional solutions.







Dining

—

## DINING WITH A VIEW

The bright dining space of a recently renovated loft is the perfect setting for the Ada collection furnishings in Canaletto finish. The table, the sideboard and the display cabinets with delicate lines compensate for the modern and dry linearity of the architectural space characterized by the strong contrast between the light colors of the ceiling, the floor and the brick wall deliberately left unfinished..





**THE POWER OF LIGHTNESS**

The Ada table is characterized by a great lightness deriving from the cleanliness and essentiality of the geometries and the extreme slenderness of the support points: behind this result of great aesthetic impact there is a technical research that has allowed the table to have great stability and also the possibility of being, if necessary, extendable.









Sevensedie



**TRIBUTE TO THE DESIGN**

Danimarca chair is a tribute in name and shape to the great Scandinavian design school of the mid-1950s. Lines, basic and decisive at once, give a unique personality to a chair that can be adapted to the most diverse styles and environments: here presented upholstered in an aqua-green tangle-like fabric that gives character and liveliness to the space as a whole.



—  
**EFFECTS OF TRANSPARENCIES**

The Ada display cabinet sums up the characteristics of the entire collection: rounded geometric lines, proportions between the elements that compose it, meticulous attention to details such as the recessed handle with metal inserts or the glass sides that give this display cabinet extreme lightness and transparency.











### THE BEAUTY OF ASYMMETRY

The Ada sideboard, probably the most representative piece of the entire collection, has a compact shape with a strong presence, lightened by the legs that detach it from the ground and by the curvilinear angles that soften the general line. The Ada sideboard has different storage configurations: the asymmetrical solution with two doors and three drawers gives absolute dynamism to this piece of furniture with a compositional result of great effect and beauty.













Dining  
—**AUTHOR'S AUTUMN IN THE VILLA**

A modern villa surrounded by a huge park. Trees and flowerbeds tinged with the warm autumn's colors. The dining area dressed in soft colors and separated from the rest of the room by a wall completely covered with Vivilla tiles. The blue-gray tones of the bench and seats, the orange of the Canaletto wood grain together with the gold of the furniture and paneling details blend thanks to the discreet light that enters from the large windows overlooking the park: an image that seems to have stop in time and space, immortalized in an author's photo.









**MODERN SOUL**

The Ermione table is the most modern piece of furniture in this collection. The cross-legged solution is the encounter between a decidedly innovative aesthetic choice and cutting-edge technical research: the result is a design object that has a strong impact but also knows how to communicate with the other furnishings.













**THOUGHTAFTER TREND**

Tizio bench is the result of trends research: more and more often the table is surrounded by seats of different types and shapes and with various uses. The bench, a traditional Italian memory of a certain way of being at the table, is part of these trends and in this collection is proposed with a buttoned cushion or with a fixed seat. Use of the trend but always in a reasoned way.











Dining  
—**URBAN REFLECTIONS**

The dining area of an apartment located in a large European metropolis lights up with warm colors and reflections of a welcoming and domestic modernity. The large slatted wall in Canaletto walnut, the intense orange of the seats and the circularity of the table in anthracite finish, give the environment an atmosphere of great tranquility, far from the background noise of the living city.



## INTIMATE CIRCULARITY

The Caio table is the circular answer to a more intimate way of being at the table. Its essential shape, clean but decisive lines, the dynamic movement given by the crossed legs slightly protruding at the base, make it an iconic and unique object. On request Caio round dining table is available with the traditional rotating dish in Carrara marble to meet every need and culture.















**BEAUTY IN THE MIRROR**

Cleope dining chair is as beautiful and intriguing as a woman is. Curved and sinuous lines, rounded profiles of the legs and back, precision of stitching and upholstery details highlight the authentic value of this modern and elegant Italian chair. A value that is not afraid of looking at itself and admiring itself.







Bedroom

—

**A TIMELESS STYLE**

A room with soft green reflections that seem to converse with the outside garden. The tone-on-tone boiserie surrounds the furniture of the collection characterized by the exclusive Modern Gray finish. Contemporary and Classic chasing each other in the details and colors of this environment, merging into a new and original, timeless style.





**STRONG CHARACTER**

The Ada double bed, with a decidedly modern cut, has a headboard that revisits the classic deep buttons padding in a modern key. The modern Gray finish gives the piece a refined elegance highlighting the wood grain in a delicate and balanced way. The result is a bed designed in compliance with the principles of contemporary comfort but with those handcrafted details that make it a unique piece with a strong character, ideal for giving the bedroom a touch of absolute personality.











**AESTHETICS AND FUNCTIONALITY**

The Ada bedside table is the ideal complement to the bed, following its elegant lines and details. Like the other furniture in the Ada collection, it was designed in several different configurations to meet all needs: here featured with a drawer, characterized by a recessed handle in metallic finish, and a large, extremely functional open compartment.













Bedroom

—

**W A R M M O D E R N I T Y**

The anthracite color of the Ada furniture, the slatted panels in Canaletto walnut and the intense green of the walls combined with the dark gray of the flooring blend together, giving this decidedly modern space an atmosphere of great warmth and intimacy.







## AESTHETICS AND FUNCTIONALITY

Ada double bed is featured in this space in its most modern and essential form: the headboard is transformed into a shell covered with a mélange fabric that highlights the lightness of the shape. The sides of the bed are reduced to a thin wooden frame supported by four slender and streamlined legs. The bed shows a decidedly minimal design without losing anything in terms of comfort and functionality.















**THE POWER OF CONSISTENCY**

The elegant Alessia armchair next to the Theo coffee table, highlighting once again that it is in the details that the Ada collection finds its reason for being coherent with itself. The Alessia armchair, with its graceful and soft lines, is inspired by the shapes of the seats of the 1950s and 1960s, reinterpreting them in a modern

key; the base, on the other hand, immediately highlights how all furniture in the Ada collection were conceived at the same time: the legs and the chromed spacers that separate the padded part from the wooden base are in fact the same as on the Theo coffee table. It is from this silent dialogue between the various pieces that the strength of the Ada collection was born.



Ad  
A

COLLECTION





Ada  
Sideboard

—  
**Art. OCR1002**  
AE - Tobacco - Cat. ZB  
Metal insert: G - Gold plated  
W. 200 D. 55 H. 85



Ada  
Sideboard

—  
**Art. OCR1000**  
CN - Canaletto - Cat. ZB  
Metal insert: L - Nikel  
W. 200 D. 55 H. 85



Ada  
Glass Cupboard

—  
**Art. OVE20**  
AE - Tobacco - Cat. ZB  
Metal insert: G - Gold plated  
W. 113 D. 45 H. 200



Moon  
Bookcase

—  
**Art. 0LB46C**  
AA - Anthracite + Canaletto - cat. ZA  
W. 107 D. 42 H. 194



**Moon**  
Bookcase with 2 drawers

—  
**Art. 0LB46A**  
AA - Anthracite + Canaletto - cat. ZA  
W. 107 D. 42 H. 194



**Moon**  
Bookcase with 1 drawer

—  
**Art. 0LB46B**  
AA - Anthracite + Canaletto - cat. ZA  
W. 107 D. 42 H. 194



**Moon**  
Bookcase

—  
**Art. 0LB46D**  
AA - Anthracite + Canaletto - cat. ZA  
W. 107 D. 42 H. 194



**Ada**  
Table

—  
**Art. 0TA20**  
AE - Tobacco - Cat. ZB  
Extensions 2 x 50 cm included  
W. 210 D. 105 H. 78



**Ermione**  
Rectangular Table

—  
**Art. 0TA50**  
CN- Canaletto - Cat. ZB  
W. 220 D. 120 H. 78



**Caspio**  
Round Table

—  
**Art. 0TA11**  
AC - Anthracite - cat. ZA  
Optional: Lazy susan Ø 60 Carrara White marble  
W. 150 D. 150 H. 80



**Noemi**  
Armchair

—  
**Art. 0725P**  
P3 - Moka - Cat. ZA  
Fabric APT - Cat. A  
W. 71 D. 84 H. 94



**Boston**  
Armchair

—  
**Art. 9454P**  
AC - Anthracite - cat. ZA  
Fabric AKL - Cat. A  
W. 87 D. 77 H. 80





**Finlandia**  
Armchair

—  
**Art. 0328A**  
WE - Wengé - cat. ZE  
Leather P96 - Cat. P  
W. 56 D. 64 H. 91



**Danimarca**  
Chair

—  
**Art. 0228S**  
AE - Tobacco - Cat. ZB  
Fabric ATJ - Cat. A  
W. 57 D. 64 H. 87



**Eden**  
Armchair

—  
**Art. 0616A**  
P3 - Moka - cat. ZA  
Combination G16 AES+ACP - Cat. A  
W. 61 D. 64 H. 89



**Alessia**  
Armchair

—  
**Art. 0724P**  
AC - Anthracite - cat. ZA  
Fabric LVH - Cat. B  
W. 73 D. 79 H. 85



**Carmela**  
Armchair

—  
**Art. 0020A**  
CN- Canaletto - Cat. ZB  
Fabric LVJ - Cat. B  
W. 57 D. 58 H. 82



**Carmela**  
Chair

—  
**Art. 0020S**  
CN- Canaletto - Cat. ZB  
Fabric LVJ - Cat. B  
W. 57 D. 58 H. 82



**Carmela**  
Bench

—  
**Art. 9020Q**  
CN- Canaletto - Cat. ZB  
Fabric LUJ - Cat. B  
W. 136 D. 55 H. 47



**Carmela**  
Bench

—  
**Art. 0020Q**  
CN- Canaletto - Cat. ZB  
Fabric AFP - Cat. A 1  
W. 136 D. 55 H. 45



Alide  
Chair

—  
**Art. 0639S**  
AC - Anthracite - cat. ZA  
Fabric AU1 - Cat. A  
W. 60 D. 67 H. 81



Celine  
Armchair

—  
**Art. 0615P**  
AC - Anthracite - cat. ZA  
Fabric ANS - Cat. A  
W. 119 D. 93 H. 89



Celine  
4 seater sofa

—  
**Art. 0615F**  
AC - Anthracite - cat. ZA  
Fabric ANS - Cat. A  
W. 228 D. 93 H. 89



**Mystirio**  
5 seater sofa

—  
**Art. 9624G**  
AC - Anthracite - cat. ZA  
Combination G14 APQ+APR - Cat. A  
W. 263 D. 92 H. 94



**Mystirio**  
3 seater sofa

—  
**Art. 9624E**  
AC - Anthracite - cat. ZA  
Combination G14 APQ+APR - Cat. A  
W. 201 D. 92 H. 94



**Mystirio**  
Ottoman

—  
**Art. 96440**  
AC - Anthracite - cat. ZA  
Combination G19 ATK+ATT - Cat. A  
W. 103 D. 81 H. 50



**Mystirio**  
Dormeuse

—  
**Art. 9642DL**

AC - Anthracite - cat. ZA  
Combination G19 ATK+ATT - Cat. A  
Optional: loose cushions #CUS039  
and #CUS59 not included  
W. 177 D. 92 H. 94



**Mystirio**  
Dormeuse

—  
**Art. 9642DR**

AC - Anthracite - cat. ZA  
Combination G19 ATK+ATT - Cat. A  
Optional: loose cushions #CUS039  
and #CUS59 not included  
W. 177 D. 92 H. 94



**Trio**  
Coffe Table

—  
**Art. 0TA147EV**

Smoked Glass Top  
Metal base: V - Giove brass  
W. 120 D. 70 H. 40



**Trio**  
Lamp Table

—  
**Art. 0TA143EL**

P3 - cat. ZA  
Metal base: R- Dark bronze  
W. 55 D. 55 H. 60



**Trio**  
Lamp table

—  
**Art. 0TA143EV**

Smoked Glass Top  
Metal base: V - Giove brass  
W. 55 D. 55 H. 60



**Mystirio**  
2 seater Element

—  
**Art. 9644DL**  
AC - Anthracite - cat. ZA  
Combination G19 ATK+ATT - Cat. A  
W. 177 D. 92H. 94



**Mystirio**  
2 seater Element

—  
**Art. 9644DR**  
AC - Anthracite - cat. ZA  
Combination G19 ATK+ATT - Cat. A  
W. 177 D. 92 H. 94



**Mystirio**  
4 seater Element

—  
**Art. 9644EL**  
AC - Anthracite - cat. ZA  
Combination G19 ATK+ATT - Cat. A  
W. 258 D. 92 H. 94



**Mystirio**  
4 seater Element

—  
**Art. 9644ER**  
AC - Anthracite - cat. ZA  
Combination G19 ATK+ATT - Cat. A  
W. 258 D. 92 H. 94



**Mystirio**  
Corner Element

—  
**Art. 9644AN**  
AC - Anthracite - cat. ZA  
Combination G19 ATK+ATT - Cat. A  
W. 90 D. 92 H. 94



**Mystirio**  
1 seater Element

—  
**Art. 9644PL**  
AC - Anthracite - cat. ZA  
Combination G19 ATK+ATT - Cat. A  
W. 98 D. 92 H. 94



**Mystirio**  
1 seater Element

—  
**Art. 9644PR**  
AC - Anthracite - cat. ZA  
Combination G19 ATK+ATT - Cat. A  
W. 98 D. 92 H. 94



Theo  
Coffe Table

—  
**Art. 0TA515M**

AC - Anthracite - cat. ZA  
Marble Top: L - Carrara white matt  
W. 130 D. 80 H. 38



Theo  
Lamp Table

—  
**Art. 0TA524L**

AC - Anthracite - cat. ZA  
W. 60 D. 60 H. 54



Theo  
Lamp Table

—  
**Art. 0TA514L**

AC - Anthracite - cat. ZA  
W. 60 D. 60 H. 54



Theo  
Lamp Table

—  
**Art. 0TA523L**

AC - Anthracite - cat. ZA  
W. 60 D. 60 H. 44





**Cercine**  
Round Mirror

—  
**Art. 0SP42**  
W. 100 D. 4 H. 100



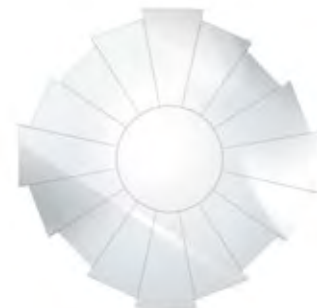
**Helica**  
Round Mirror

—  
**Art. 0SP45**  
U4 - New Silver Leaf - Cat. ZH  
W. 110 D. 5 H. 110



**Declive**  
Rectangular Mirror

—  
**Art. 0SP43**  
U4 - New Silver Leaf - Cat. ZH  
W. 75 D. 5 H. 180



**Solis**  
Round Mirror

—  
**Art. 0SP44**  
W. 87 D. 2 H. 87



Ada  
Bed

—  
**Art. 0LT21**  
AC - Anthracite - cat. ZA  
Fabric LUJ - Cat. B  
W. 193 D. 217 H. 100  
for mattress 180x200



Ada  
Nighstand

—  
**Art. 0CD21**  
AC - Anthracite - cat. ZA  
Metal insert: L - Nickel  
W. 55 D. 40 H. 59



Ada  
Bed

—  
**Art. 0LT20**  
AD - London Grey - Cat. ZA  
Leather P0N - Cat. P  
W. 193 D. 217 H. 102  
for mattress 180x200



**Ada**  
Dressing Table with Swivel Mirror

—  
**0ST21**  
AC - Anthracite - cat. ZA  
Metal insert: G - Gold plated  
W. 140 D. 52 H 79 (top) H. 130 (total)



**Sirio**  
Ottoman

—  
**06360**  
Metal Base: G - Gold plated  
Fabric AD3 - Cat. A  
W. 53 D. 53 H. 48



**Ada**  
Nighstand

—  
**Art. 0CD20**  
AD - London Grey - Cat. ZA  
Metal insert: L - Nickel  
W. 55 D. 45 H. 59



**Ada**  
Chest of Drawers

—  
**Art. 0CO20**  
AD - London Grey - Cat. ZA  
Metal insert: L - Nickel  
W. 140 D. 56 H. 97



**Lemonia**  
Suspension Lamp Composition

—  
**Art. 0LPP10326**  
Ø 65 Ø 82 Ø 110



**Lemonia**  
Wall Lamp

—  
**Art. 0LPP20322**  
Ø 82



**Quirina**  
Suspension Lamp

—  
**Art. 0LP10272**  
Ø 70



**Quirina**  
Suspension Lamp

—  
**Art. 0LP10273**  
Ø 95



**Quirina**  
Suspension Lamp

—  
**Art. 0LP10274**  
Ø. 130



**Fabia**  
Suspension Lamp

—  
**Art. 0LP10222**  
W. 165



**Fabia**  
Floor Lamp

—  
**Art. 0LP50221**  
H. 185



**Pobilia**  
Suspension Lamp

—  
**Art. 0LP10284**  
W. 59 D. 59



**Pobilia**  
Suspension Lamp

—  
**Art. 0LP10287**  
W. 115 D. 31



**Aquila**  
Wall Lamp

—  
**Art. 0LP27002**  
W.50 D. 10 H. 20



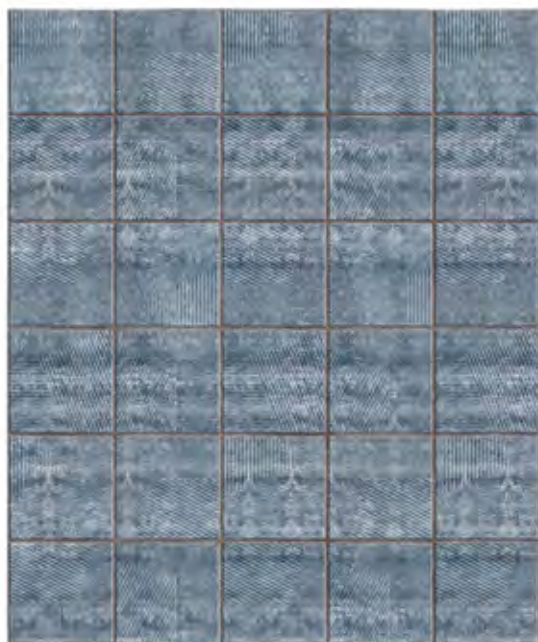
**Lavinia**  
Suspension Lamp

—  
**Art. 0LP10182**  
Ø 5,4 H. 30



**Lavinia**  
Suspension Lamp

—  
**Art. 0LP10184**  
Ø 10 H.22



Armilla  
—  
Art. OTT01A00001



ArmillaBig  
—  
Art. OTT02A00002



ArmillaBig  
—  
Art. OTT02C00004



English  
—  
Art. OTT03A00005



Frames

—  
Art. 0TT04A00005



Grid

—  
Art. 0TT05A00004



Damask

—  
Art. 0TT06A00002



Cloud

—  
Art. 0TT07A00004





Cuadro

—  
Art. OTT08A00004



Classics

—  
Art. OTT09B00001

Standard sizes rugs

- Rectangular cm. 300 x 2 00
- Rectangular cm. 360 x 270
- Round diam. 260 cm

Customization

- Available on request



Vivilla

Boiserie panel

—  
Art. WVIV01

CN - Canaletto + RAL cat. ZB  
W. 55 D. 6 H. 55

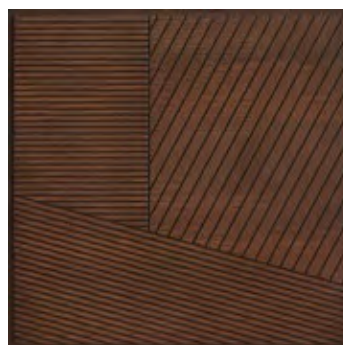


Vivilla

Boiserie panel

—  
Art. WVIV02

CN - Canaletto + RAL cat. ZB  
W. 55 D. 6 H. 55

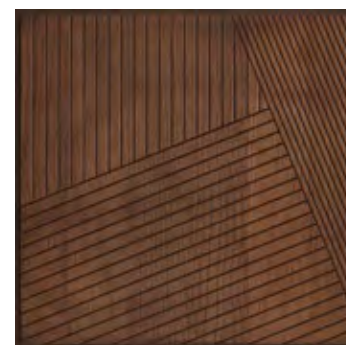


Armilla

Boiserie panel

—  
Art. WARM01

CN - Canaletto - cat. ZB  
W. 55 D. 3,5 H. 55



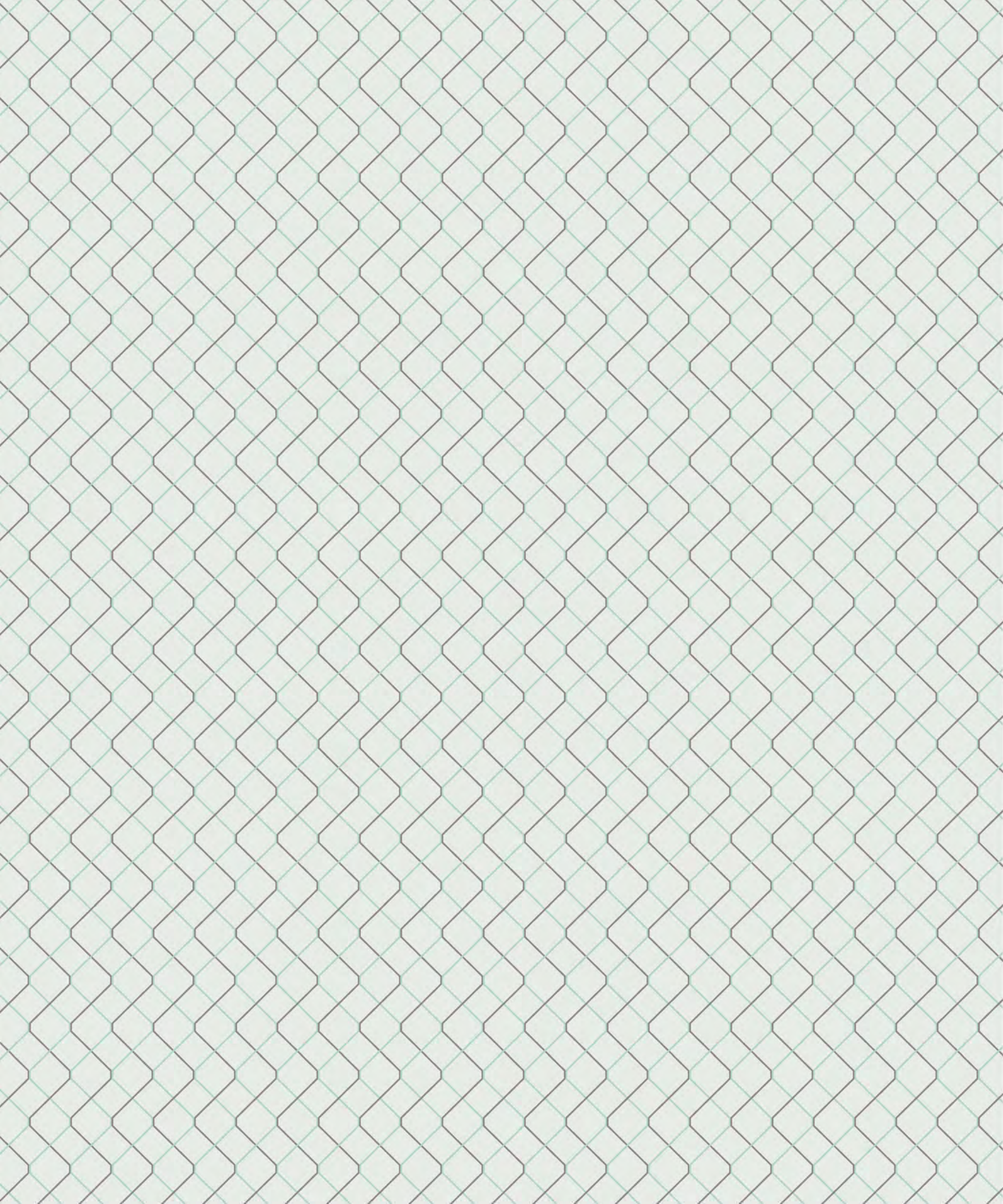
Armilla

Boiserie panel

—  
Art. WARM02

CN - Canaletto - cat. ZB  
W. 55 D. 3,5 H. 55





SEVEN SEDIE

S | Ad  
A  
COLLECTION