

# Etica + Estetica 11



Home Srl Cucine Componibili

Via III Settembre, 2 - 31030 Cison di Valmarino (TV) Italy - Tel. +39 0438 975155 - Fax +39 0438 975332-975584  
www.homecucine.com - info@homecucine.com - www.homecucine.ru - www.homecuisines.fr - www.homecucine.pl



www.homegreenhomeblog.com

MODELLO / MODEL ESTETICA



frassino tinto  
frassino laccato

stained ash  
lacquered ash

frêne teinté  
frêne laqué

Esche gebeizt  
Esche lackiert

fresno teñido  
fresno lacado

окрашенный  
ясень  
лакированный  
ясень

jesion barwiony  
jesion lakierowany

MODELLO / MODEL ETICA



laccato opaco

matt lacquer

laqué mat

Matt lackiert

lacado mate

матовая  
лакировка

lakierowany  
matowy

Protagonista la cucina. I modelli Etica ed Estetica dialogano magnificamente tra loro riuscendo a convivere nella stessa composizione di cucina, oppure possono essere impiegati individualmente per dare un taglio più netto allo stile.

Le cornici leggere le rendono adattabili a spazi diversi tra loro: dal moderno dove coabitano benissimo con particolari in finitura acciaio ad ambienti dal richiamo più classico con dettagli come la cornice-cappello oppure gli estraibili con fregio.

Un'unico modello di anta, interfacciabile con due diverse finiture: laccato opaco per Etica e frassino tinto o laccato per Estetica. Queste due nuove collezioni donano un tocco di freschezza ad ogni cucina seppur mantenendo un alto livello di raffinatezza.

Starring the kitchen. The Etica and Estetica models enjoy perfect communication so that they can coexist magnificently in the same kitchen layout or stand alone for a more defined look.

Their slim frames allow them to adapt to different styles ranging from modern, where they pair beautifully with steel finish accents, to classic furniture including details such as crown moulding cornices or pullouts with embellished fronts.

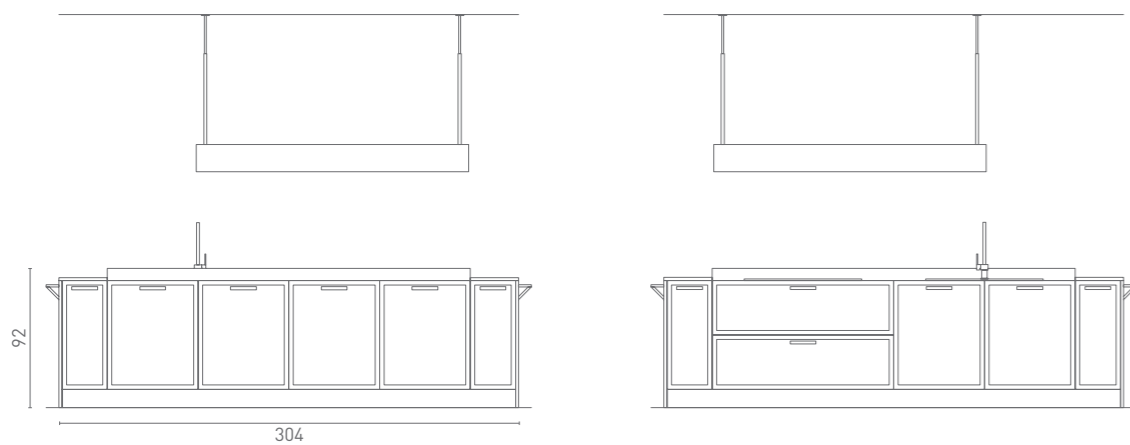
One door model with two different finishes: matt lacquer for Etica and stained or lacquered ash for Estetica. Two new collections that add a fresh and really refined touch to any kitchen.

# 01

AMBIENTAZIONE  
GLAMOUR  
GLAMOROUS  
SETTING

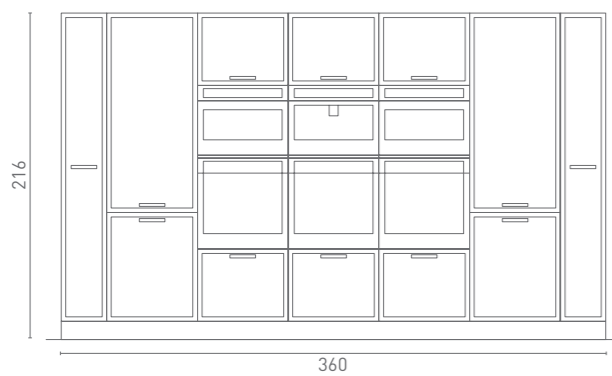
## Basi

Base units / Éléments bas / Unterschränke / Muebles bajos / Основания / Szafki dolne



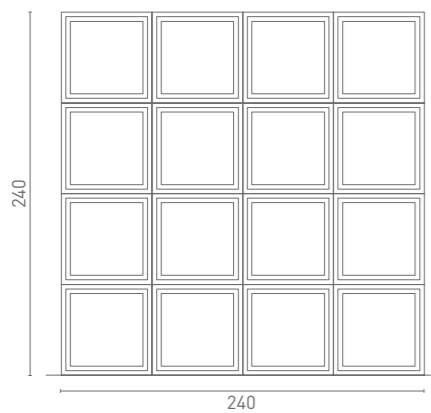
## Colonne

Tall units / Armoires / Hochschränke / Columnas / Колонны / Stupki



## Vitrine

Glass display cabinets / Vitrines / Glasschränke / Vitrinas / Витрины / Witryny



## ETICA

Composizione realizzata in laccato tela e laccato peltro - bancone in rovere nodato - top in HPL bianco

Arrangement in Tela and Peltro lacquer - breakfast bar in knotted oak - white HPL worktop

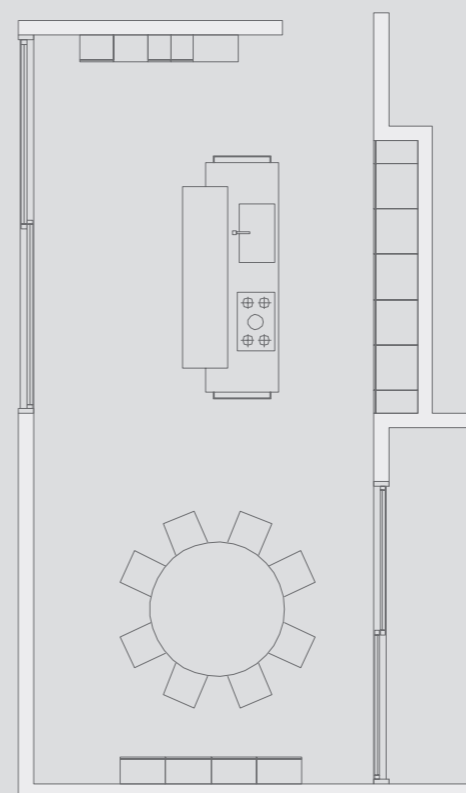
Composition réalisée en laqué Tela et laqué Peltro - plan snack en chêne à nœuds - plan de travail en HPL blanc

Zusammenstellung lackiert Farbe Tela und lackiert Farbe Peltro - Thekenelement in Eiche astig - Arbeitsplatte aus weißem HPL

Composición con acabado lacado tela y lacado peltro - barra de desayunos en roble con nudos - encimera de HPL blanco

Композиция выполнена из лакированных панелей цвета "tela" и "peltro", рабочий стол - из дуба с сучками, столешница - из белого ламината

Kompozycja wykonana w polysku ptótno oraz polysku cyna - blat z dębu sękowego i z białego laminatu HPL





Fulcro di questa cucina è l'isola con bancone in rovere nodato e top in HPL bianco, con cappa sospesa multifunzionale e pareti attrezzate allestite con forni, vetrine e soluzioni di contenimento evolute.

The centrepiece of this kitchen is the island with its knotted oak breakfast bar and white HPL worktop. The multifunction hood is ceiling-hung while the walls are fitted with ovens, glass display cabinets and state-of-the-art storage units.



Sopra: il lavello in acciaio inox semi filo top con dissipatore.  
Sotto: gioco di spessori, dato dal bancone in rovere nodato H 60 mm e il top in HPL bianco H 20 mm.

Top right: stainless steel overmount sink with dissipater.  
Right: close-up view of how the thickness of the 60-mm high knotted oak breakfast bar contrasts with the 20-mm high white HPL worktop.









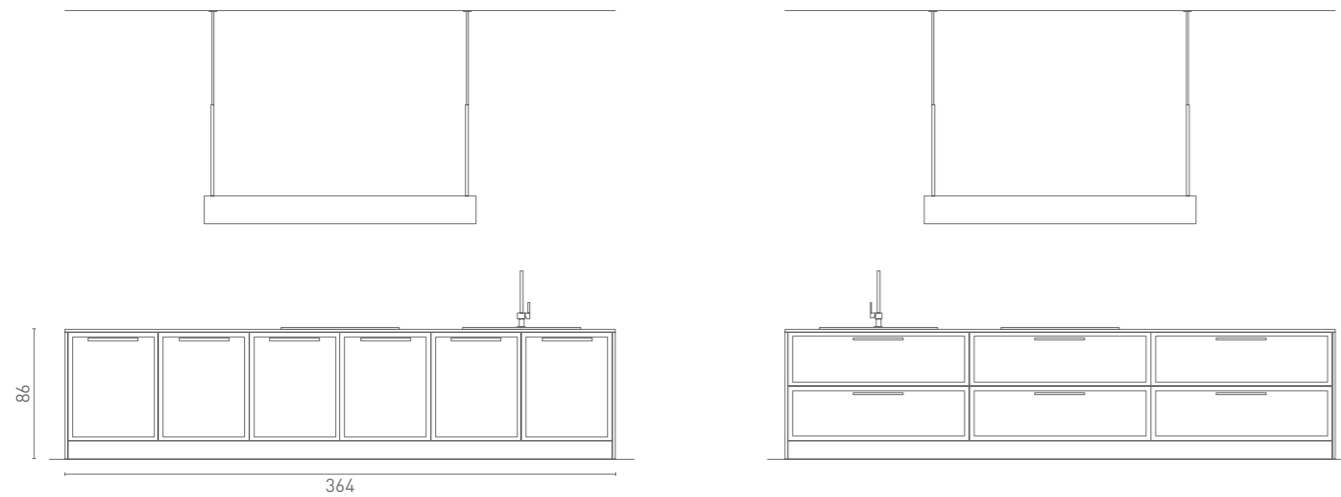


# 02

AMBIENTAZIONE  
GLAMOUR  
GLAMOROUS  
SETTING

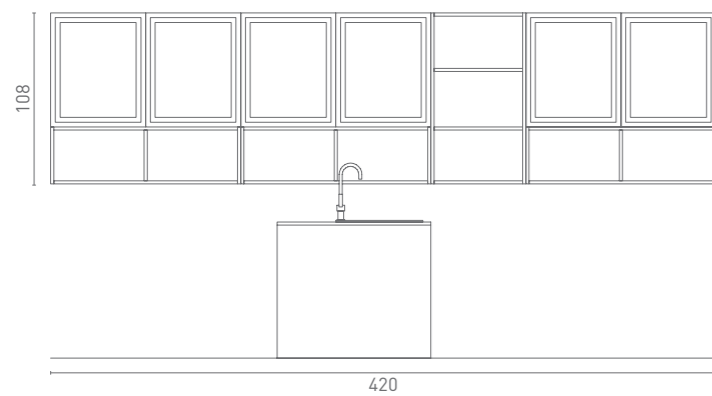
## Basi

Base units / Éléments bas / Unterschränke / Muebles bajos / Основания / Szafki dolne



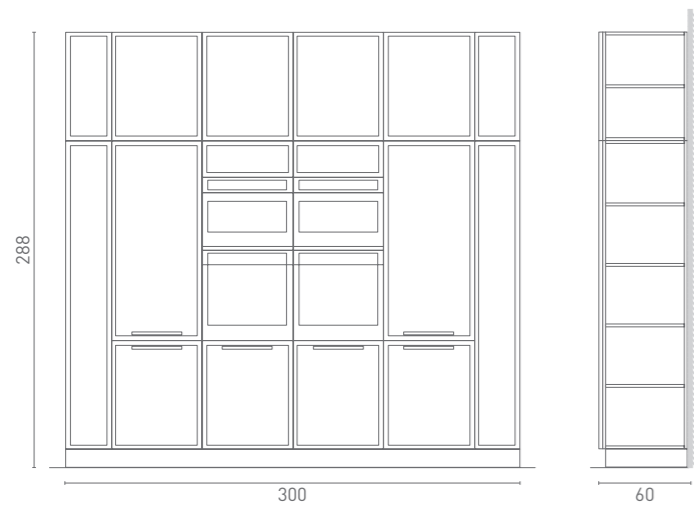
## Pensili

Wall units / Éléments hauts / Hängeschränke / Colgantes / Навесные шкафы / Szafki wiszące



## Colonne

Tall units / Armoires / Hochschränke / Columnas / Колонны / Stupki



## ESTETICA

Composizione realizzata in frassino tinto mud e frassino laccato safari - particolari interno vetrina in rovere nodato, vani a giorno in frassino tinto mud - top in acciaio

Layout in Mud stained and Safari lacquered ash - knotted oak trims inside the glass display cabinets - Mud stained ash open shelving and stainless steel worktop

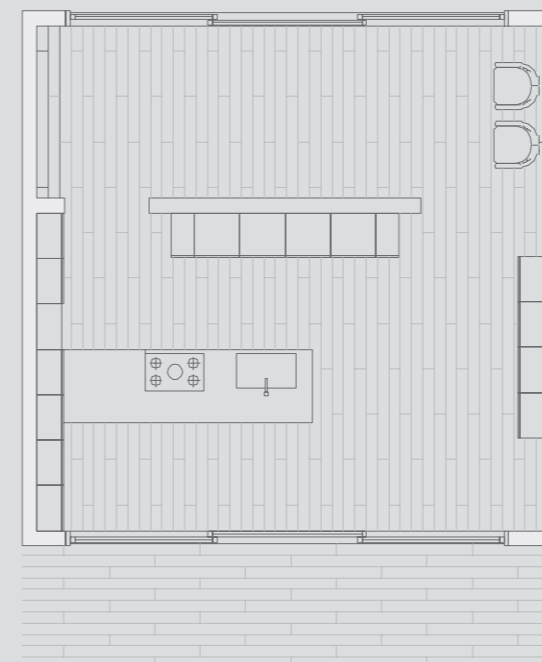
Composition réalisée en frêne teinté Mud et frêne laqué Safari - éléments intérieurs de la vitrine en chêne à nœuds, éléments ouverts en frêne teinté Mud - plan de travail en acier inox

Zusammenstellung in Esche gebeizt Farbe Mud und Esche lackiert Farbe Safari - Innendetails des Glasschranks in Eiche astig, offene Fächer in Esche gebeizt Farbe Mud - Arbeitsplatte aus Stahl

Composición realizada en fresno teñido mud y fresno lacado safari - pormenores del interior de la vitrina en roble con nudos, compartimentos abiertos en fresno teñido mud - encimera de acero

Композиция выполнена из ясеня цвета "mud" и из ясеня с лакировкой "safari", внутренние детали витрины - из дуба с сучками, открытые отсеки - из ясеня цвета земли, столешница - из стали

Kompozycja wykonana w jesionie barwionym mud oraz jesionie lakierowanym safari - szczegóły wnętrza witryny z dębu sękowego, przedział z jesionu barwionego mud - blat ze stali nierdzewnej







ESTETICA





Dettaglio del pensile "a gabbia" con profili in finitura laccato moka, ripiani e schienali in frassino laccato safari.  
Close-up view of the open wall unit with a Moka lacquered framework and Safari lacquered ash shelves and back panels.





Penisola bifacciale dai frontali in frassino tinto mud con ante sul lato esterno e cestoni sul lato interno al piano di lavoro.  
I cestoni frenanti, da 120 cm sono dotati di sponda in metallo tinta antracite e testati per 50.000 cicli di apertura/chiusura su una portata massima di 40 kg.

PenisolTwo-sided peninsula with Mud stained ash fronts; the rear is fitted with doors and the front with deep drawers.  
The 120-cm wide, soft-close deep drawers have anthracite grey sides and have been tested for 50,000 opening/closing cycles with a maximum capacity of 40 kg.

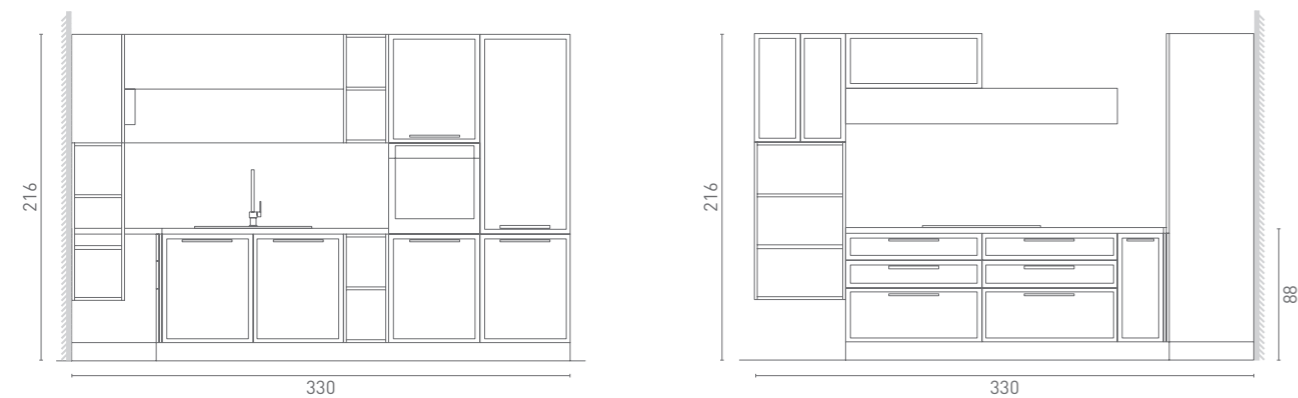


# 03

AMBIENTAZIONE  
GLAMOUR  
GLAMOROUS  
SETTING

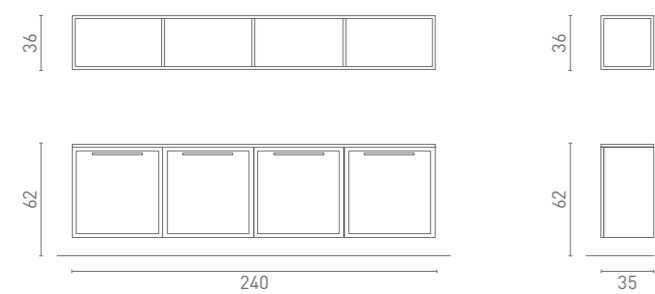
## Basi

Base units / Éléments bas / Unterschränke / Muebles bajos / Основания / Szafki dolne



## Pensili

Wall units / Éléments hauts / Hängeschränke / Colgantes / Навесные шкафы / Szafki wiszące



Composizione realizzata in frassino tinto matter, frassino laccato bosco e laccato smog - top 630 tiffany

Layout in Matter stained ash, Bosco and Smog lacquered ash. 630 Tiffany worktop.

Composition réalisée en frêne teinté Matter, frêne laqué Bosco et en laqué Smog - plan de travail 630 tiffany

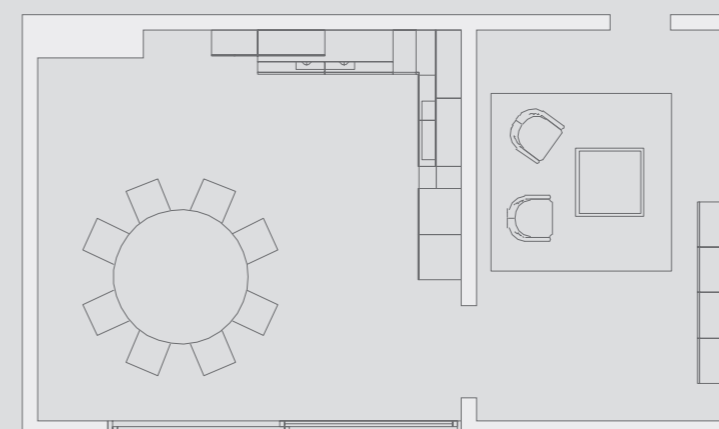
Zusammenstellung in Esche gebeizt Farbe Matter, Esche lackiert Farbe Bosco und Smog - Arbeitsplatte 630 Tiffany

Composición realizada en fr-sno teñido matter, fresno lacado bosque y lacado smog - encimera 630 tiffany

Композиция выполнена из ясеня цвета "matter", ясеня с лакировкой "bosco" и лакировкой "smog", столешница - 630 tiffany

Kompozycja wykonana w jesionie matter, w jesionie lakierowanym las oraz w potysku smog - blat 630 tiffany

ETICA + ESTETICA





Cucina ad angolo con basi in finitura frassino tinto matter e sistema di pensili in finitura frassino laccato bosco e laccato smog, per un più ampio utilizzo del piano di lavoro.

Corner arrangement with base units in Matter stained ash. The wall units in Bosco and Smog lacquered ash free lots of space to use the ample and practical worktop below.







A sinistra: dettaglio colonne in finitura frassino tinto matter, con forno integrato.  
In basso: cappa in finitura frassino laccato bosco in tinta con i pensili. Nell'angolo a destra, pensili in finitura laccato smog.

Bottom left: close-up view of the Matter stained ash tall units with an integrated oven.  
Bottom: Bosco lacquered ash hood matching the wall units. Smog lacquered wall units in the right-hand corner.

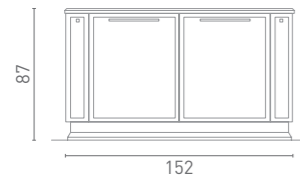


# 04

AMBIENTAZIONE  
CLASSICO  
CONTEMPORANEO  
CLASSIC CONTEMPORARY  
SETTING

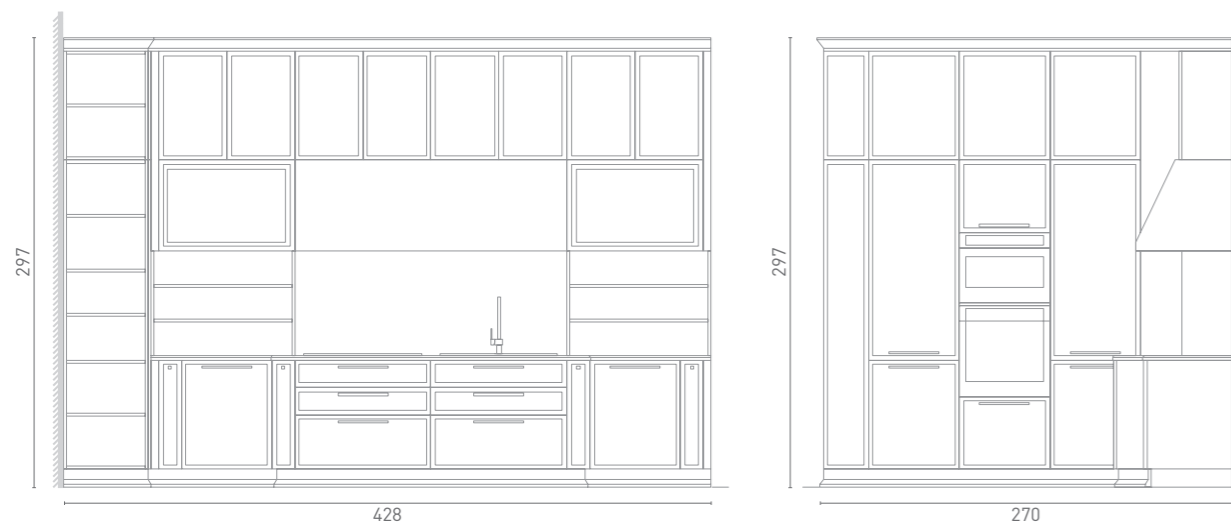
## Basi

Base units / Éléments bas / Unterschranke / Muebles bajos / Основания / Szafki dolne



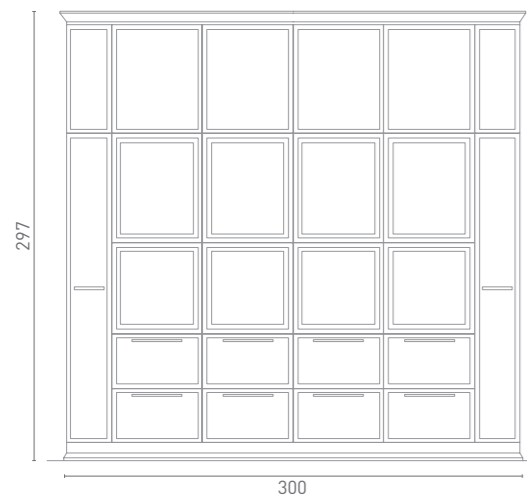
## Colonne

Tall units / Armoires / Hochschranke / Columnas / Колонны / Stupki



## Vitrine

Glass display cabinets / Vitrites / Glasschränke / Vitrinas / Витрины / Witryny



## ESTETICA

Composizione realizzata in frassino tinto brown e frassino laccato luce - particolari interno vetrina in rovere nodato - top in marmo bianco Carrara

Layout in Brown stained ash and Luce lacquered ash - knotted oak trims inside the glass display cabinets - Bianco Carrara marble worktop.

Composition réalisée en frêne teinté Brown et frêne laqué Luce - éléments intérieurs de la vitrine en chêne à nœuds - plan de travail en marbre blanc Carrara

Zusammenstellung in Esche gebeizt Farbe Brown und Esche lackiert Farbe Luce - Innendetails des Glasschranks in Eiche astig - Arbeitsplatte aus Marmor Bianco Carrara

Composición realizada en fresno teñido brown y fresno lacado luz - pormenores del interior de la vitrina en roble con nudos - encimera de mármol blanco Carrara

Композиция выполнена из ясеня цвета "brown" и из ясеня с лакировкой "luce", внутренние детали витрины - из дуба с сучками, столешница - из Белого каррарского мрамора

Kompozycja wykonana z jesionu barwionego brown i jesionu lakierowanego światło - szczegóły wnętrza witryny z dębu sękowego - blat z białego marmuru Carrara







ESTETICA

Vano portabottiglie estraibile dotato di attrezzatura in filo cromo e frontale in frassino tinto brown, con fregio in tinta.

Pullout bottle-rack with chrome wire racks and Brown stained ash front and embellishment.



## ESTETICA

Sulla parete di fondo: colonna con vetrina a luci led integrate e schienali in finitura rovere nodato, caratterizzata da ripiani interni in vetro, montati con apposita ferramenta anti ribaltamento.

Far back wall: tall units with glass display cabinets, integrated led lights, knotted oak finish back panels and glass interior shelves fitted with anti-tip hardware.





Il Marmo è un materiale naturale con caratteristiche ineguagliabili di solidità e durata; presenta differenze di tonalità e, per la sua unicità, non è mai perfettamente riproducibile: piccoli fori e venature sono difetti naturali caratteristiche e peculiarità di questo prodotto. Sono disponibili anche piani di lavoro in laminato o in granito.

Marble is a natural stone with unmatched solidity and durability. Its colour variations mean that it can never be perfectly reproduced because each slab is unique. Small holes and veins are natural characteristics that distinguish this product. Laminate and granite worktops are also available.



Cassetti personalizzabili con ben due linee di divisori interni: Elite-Line ed Easy Line. La prima accosta il calore del legno alla lucentezza dell'acciaio e la seconda, il legno massello all'acciaio inox e polietilene bianco. Entrambe le linee offrono infinite combinazioni, realizzabili abbinando tra loro, gli accessori all'interno dei cassetti e cestoni.

Our drawers can be customised with the help of two lines of inserts and organisers: the Elite-Line and the Easy Line. The former pairs the warmth of wood with the brilliance of steel while the latter combines solid wood with stainless steel and white polyethylene. Both lines offer an endless array of combinations that can be achieved by putting together various accessories inside our drawers and deep drawers.



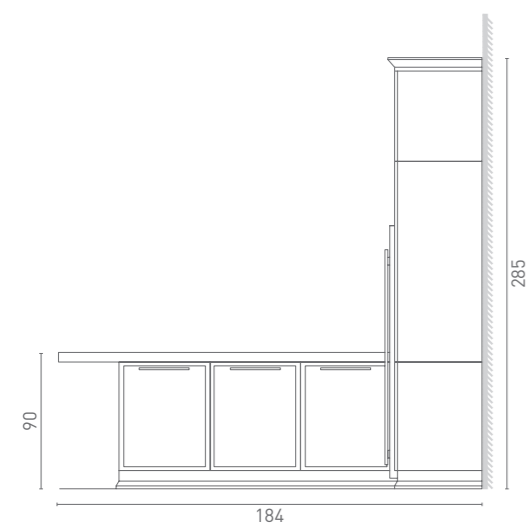
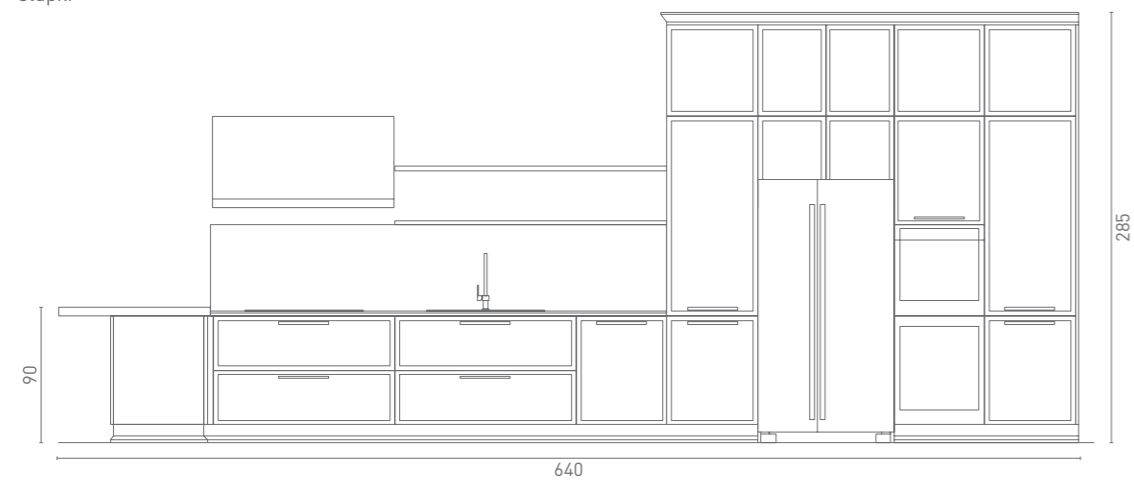


# 05

AMBIENTAZIONE  
CLASSICO  
CONTEMPORANEO  
CLASSIC CONTEMPORARY  
SETTING

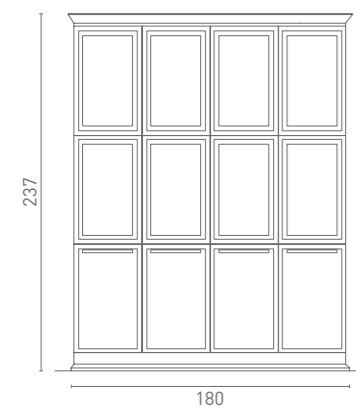
## Basi e Colonne

Base and Tall units / Éléments bas et Armoires / Unterschränke und Hochschränke / Muebles bajos y Columnas / Основания и колонны / Szafki dolne i słupki



## Vitrine

Glass display cabinets / Vitrines / Glasschränke / Vitrinas / Витрины / Witryny



## ETICA + ESTETICA

Composizione realizzata in frassino tinto matter e laccato vapore - particolari interno vetrina in rovere nodato - bancone in frassino tinto matter - top in marmo Emperador

Layout in Matter stained and Vapore lacquered ash - knotted oak trims inside the glass display cabinets - breakfast bar in Matter stained ash - Emperador marble worktop.

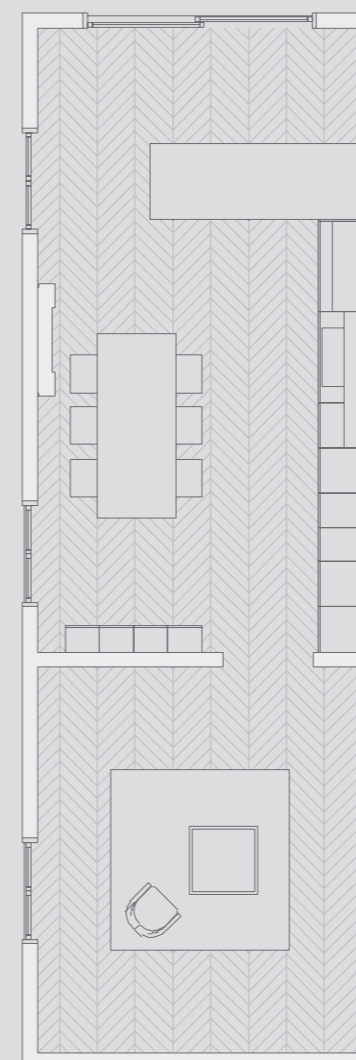
Composition réalisée en frêne teinté Matter et laqué Vapore - éléments intérieurs de la vitrine en chêne à nœuds - plan snack en frêne teinté Matter - plan de travail en marbre Emperador

Zusammenstellung in Esche gebeizt Farbe Matter und lackiert Farbe Vapore - Innendetails des Glasschranks in Eiche astig - Thekenelement in Esche gebeizt Farbe Matter - Arbeitsplatte aus Marmor Emperador

Composición realizada en fresno teñido matter y lacado vapor - pormenores del interior de la vitrina en roble con nudos - barra de desayunos en fresno teñido matter - encimera de mármol Emperador

Композиция выполнена из ясеня цвета "matter" и с лакировкой "vapore", внутренние детали витрины - из дуба с сучками, рабочий стол - из ясеня цвета "matter", столешница из мрамора Emperador

Kompozycja wykonana w jesionie matter oraz w potysku para - szczegóły wnętrza witryny z dębu sękowego - lada z jesionu matter - blat z marmuru Emperador





ETICA + ESTETICA



A sinistra: bancone snack in finitura frassino tinto matter H 60 mm con base in finitura laccato vapore.  
In basso: particolare dell'angolo cottura e lavello sottotop in acciaio inox. Top H 30 mm con alzata in marmo Emperador.

Bottom left: breakfast bar in 60-mm high Matter stained ash with Vapore lacquered base units.  
Bottom: detail of the corner hob and stainless steel undermount sink. 30-mm high Emperador marble worktop and splashback.





Basi e frontali colonne, in finitura laccato vapore in accostamento al bancone in frassino tinto matter e top in marmo emperador. Vetrina con frontali frassino tinto matter e schienali interni a vista, in rovere nodato.

Vapore lacquered base units and tall unit fronts paired with a Matter stained ash breakfast bar and an Emperador marble worktop. The glass display cabinet has Matter stained ash fronts and visible, interior back panels in knotted oak.



Dettaglio del profilo dell'anta in frassino tinto matter con cornice in rilievo. Maniglia in finitura cromo satinato.

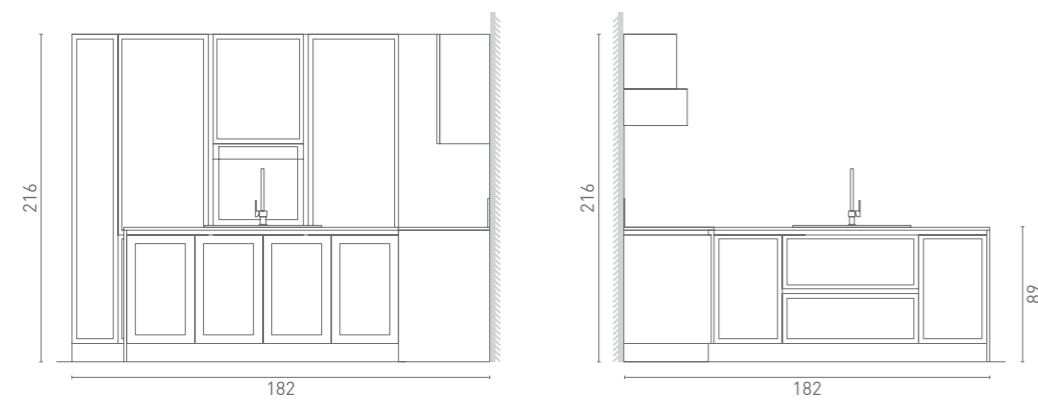
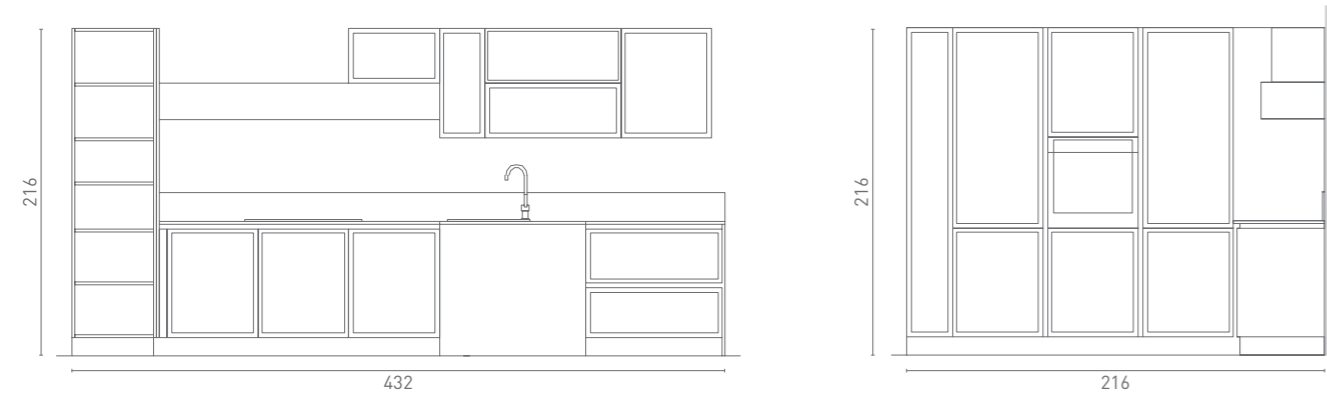
Close-up view of the Matter stained ash door profile with a raised frame. Satin chrome finish handle.

# 06

AMBIENTAZIONE  
MODERNO  
METROPOLITANO  
MODERN METROPOLITAN  
SETTING

## Basi

Base units / Éléments bas / Unterschranke / Muebles bajos / Основания / Szafki dolne



## ESTETICA

Composizione realizzata in frassino tinto mud, frassino laccato cupo, frassino laccato infinito - bancone e top laminato Mika

Layout in Mud stained, Cupo lacquered and Infinito lacquered ash. Mika laminate peninsula top and worktop.

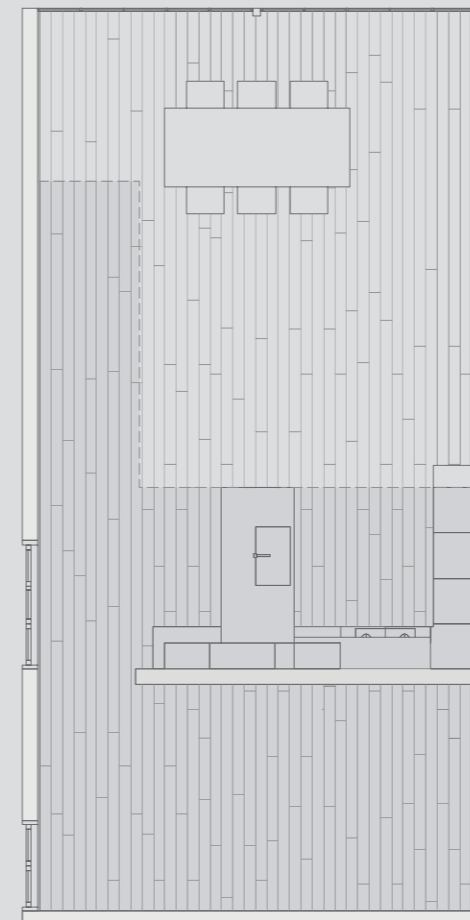
Composition réalisée en frêne teinté Mud, frêne laqué Cupo, frêne laqué Infinito - plan de travail y compris le plan en épi en stratifié Mika

Zusammenstellung in Esche gebeizt Farbe Mud, Esche lackiert Farbe Cupo, Esche lackiert Farbe Infinito - Thekenelement und Arbeitsplatte aus Laminat Mika

Composición realizada en fresno teñido mud, fresno lacado oscuro, fresno lacado infinito - barra de desayunos y encimera en laminado Mika

Композиция выполнена из ясеня цвета "mud", ясеня с лакировкой "cupo", ясеня с лакировкой "infinito", рабочий стол и столешница - из ламината Mika

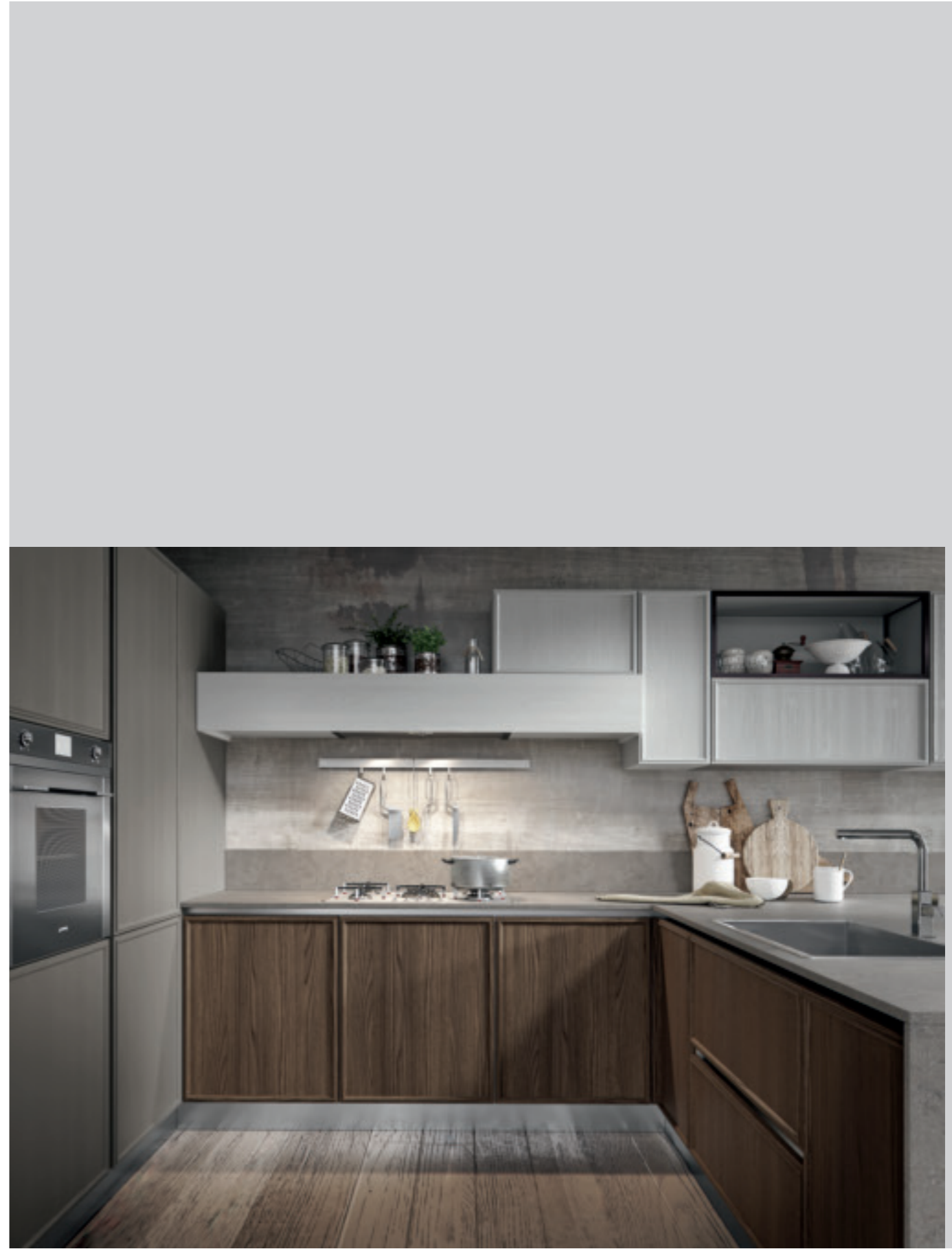
Kompozycja wykonana w jesionie barwionym mud, jesionie lakierowanym cupo, jesionie lakierowanym infinito - ladaiblatzlaminatu Mika







Particolare del bancone e top in finitura laminato Mika.  
Detail of the Mika laminate peninsular top and worktop.





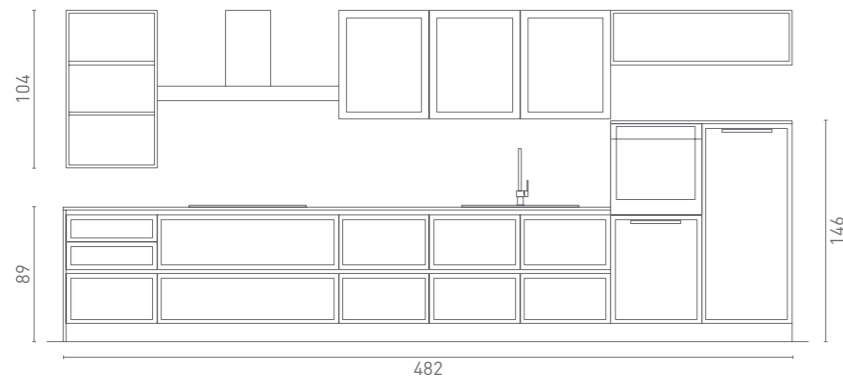


# 07

## AMBIENTAZIONE MODERNO METROPOLITANO MODERN METROPOLITAN SETTING

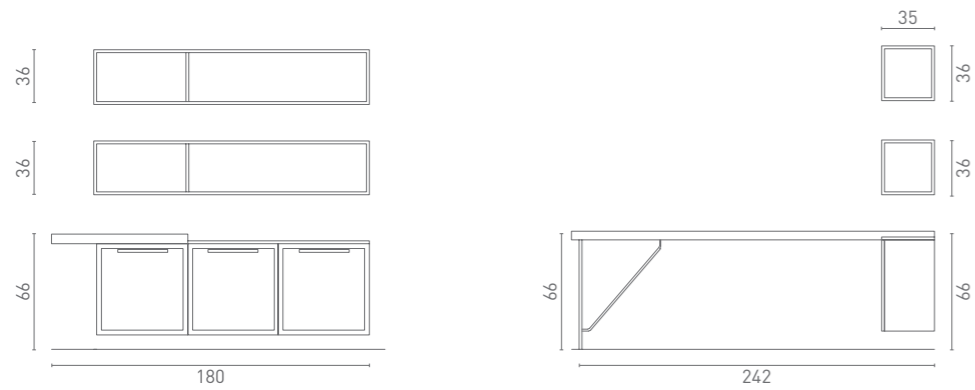
### Basi e Pensili

Base and wall units / Éléments bas et Éléments hauts / Unterschränke und Hängeschränke / Muebles bajos y Colgantes / Основания и навесные шкафы / Szafki dolne i Szafki wiszące



### Pensili

Wall units / Éléments hauts / Hängeschränke / Colgantes / Навесные шкафы / Szafki wiszące



## ETICA

Composizione realizzata in laccato grigio quarzo - particolari interno vetrina in rovere nodato - bancone rovere nodato - top in marmo nero Marquinia

Layout in Grigio Quarzo lacquer - knotted oak trims inside the glass display cabinets - peninsular top in knotted oak - Nero Marquinia marble worktop.

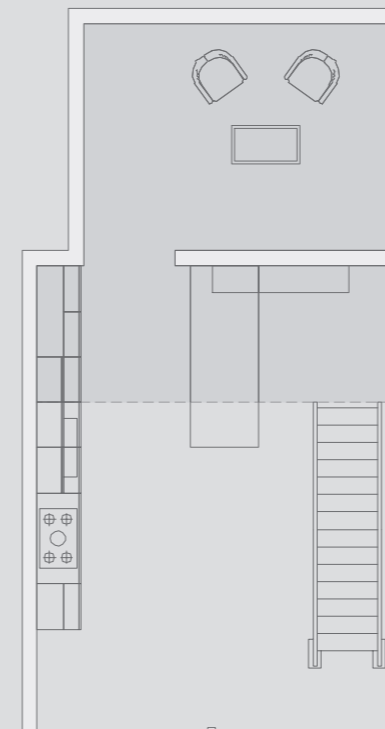
Composition réalisée en laqué Grigio quarzo - éléments intérieurs de la vitrine en chêne à nœuds - table repas en épi en chêne à nœuds - plan de travail en marbre noir Marquinia

Zusammenstellung lackiert Farbe Grigio Quarzo - Innendetails des Glasschranks in Eiche astig - Thekenelement in Eiche astig - Arbeitsplatte aus Marmor Nero Marquinia

Composición con acabado lacado gris cuarzo - pormenores del interior de la vitrina en roble con nudos - barra de desayunos en roble con nudos - encimera de mármol negro Marquinia

Композиция выполнена из лакированных панелей цвета "grigio quarzo", внутренние детали витрины - из дуба с сучками, рабочий стол - из дуба с сучками, столешница - из черного мрамора Marquinia

Kompozycja wykonana w połysku szary kwarc - szczegóły wnętrza witryny z dębu sękowego - lada z dębu sękowego - blat z czarnego marmuru Marquinia





ETICA





Sullo sfondo: dettaglio del pensile con anta in vetro temperato e "motivo a rete" serigrafato.  
 In primo piano: sistema di pensili "a gabbia" con schienali e ripiani in rovere nodato.

In the background: a glimpse of the wall unit with a tempered, mesh-effect screen printed glass panel.  
 In the foreground: open wall shelving system with knotted oak back panels and shelves.





Pensili "a gabbia" con ripiani in rovere nodato.

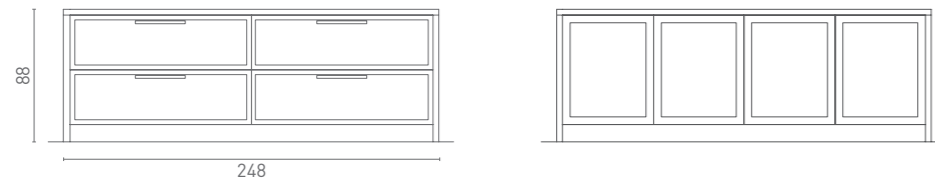
Open wall units with knotted oak shelves.

# 08

## AMBIENTAZIONE MODERNO METROPOLITANO MODERN METROPOLITAN SETTING

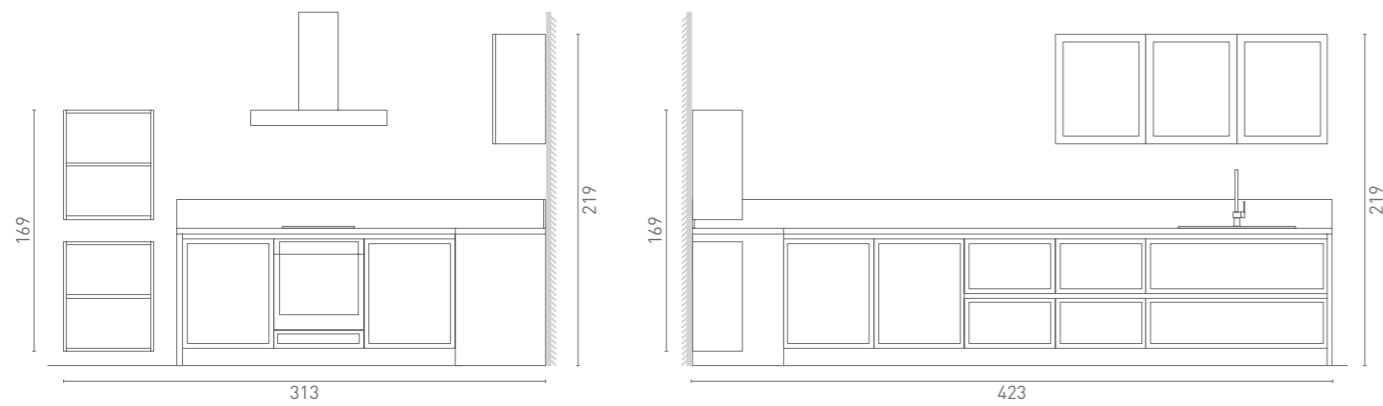
### Basi

Base units / Éléments bas / Unterschränke / Muebles bajos / Основания / Szafki dolne



### Basi e Pensili

Base and wall units / Éléments bas et Éléments hauts / Unterschränke und Hängeschränke / Muebles bajos y Colgantes / Основания и навесные шкафы / Szafki dolne i Szafki wiszące



Composizione realizzata in laccato cachemire - particolari interno vetrina in rovere nodato - bancone e top in laminato Luserna grigio

Layout in Cachemire lacquer - knotted oak trims inside the glass display cabinets - island top and worktop in Luserna Grigio laminate.

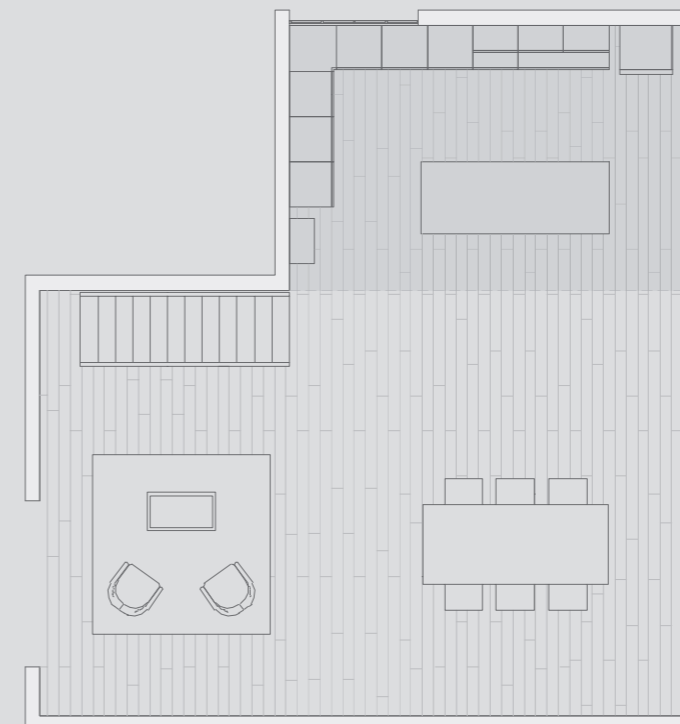
Composition réalisée en laqué Cachemire - éléments intérieurs de la vitrine en chêne à nœuds - plan de travail y compris celui de l'îlot en stratifié Luserna grigio

Zusammenstellung lackiert Farbe Cachemire - Innendetails des Glasschranks in Eiche astig - Thekenelement und Arbeitsplatte aus grauem Laminat Luserna

Composición con acabado lacado cachemira - pormenores del interior de la vitrina en roble con nudos - barra de desayunos y encimera en laminado Luserna gris

Композиция выполнена из лакированных панелей цвета "cachemire", внутренние детали витрины - из дуба с сучками, рабочий стол и столешница - из ламината "Luserna grigio"

Kompozycja wykonana w polysku kaszmir - szczegóły wnętrza witryny z dębu sękowego - lada i blat z laminatu Luserna grigio











ETICA



Telaio ante in alluminio laccato moka con vetro serigrafato con "motivo a rete".

Door frames in Moka lacquered aluminium with mesh-effect, screen printed glass panels.

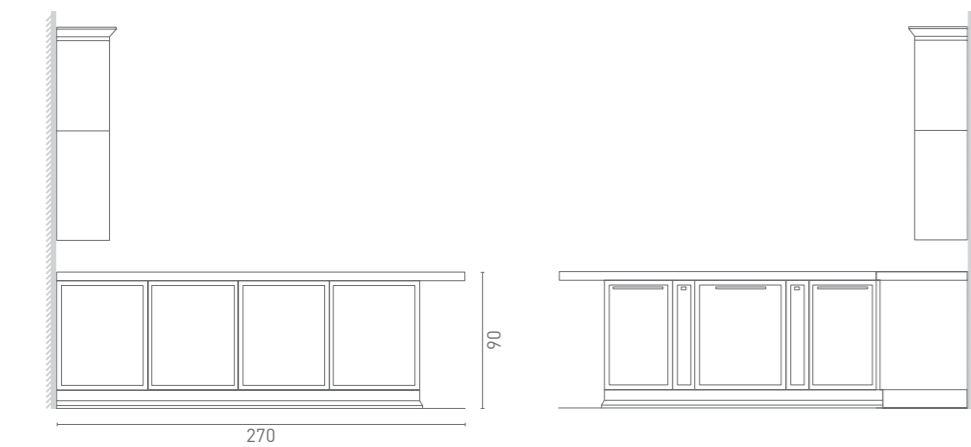
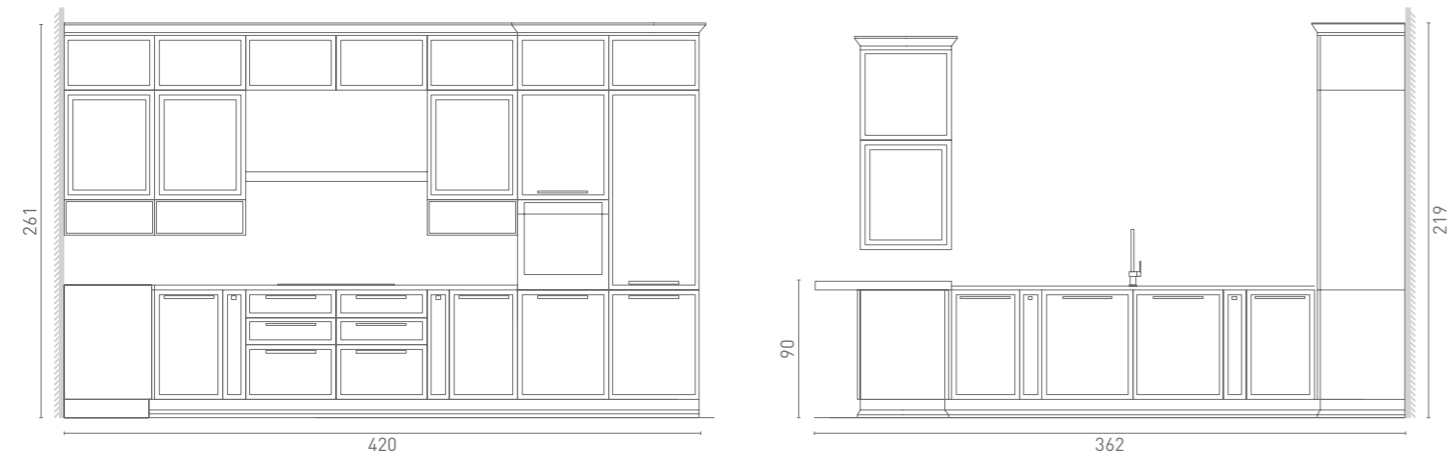


# 09

## AMBIENTAZIONE SHABBY CHIC SHABBY CHIC SETTING

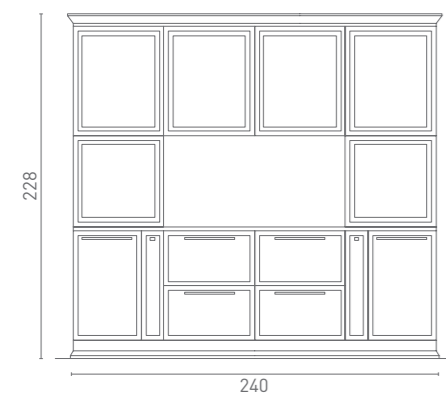
### Basi e Colonne

Base and Tall units / Éléments bas et Armoires / Unterschränke und Hochschränke / Muebles bajos y Columnas / Основания и колонны / Szafki dolne i Stupki



### Vitrine

Glass display cabinets / Vitrines / Glasschränke / Vitrinas / Витрины / Witryny



## ESTETICA

Composizione realizzata in frassino laccato cannella - particolari interno vetrina in rovere nodato - bancone in HPL bianco- top 630 Tiffany

Layout in Cannella lacquered ash - knotted oak trims inside the glass display cabinets - breakfast bar in white HPL - 630 Tiffany worktop.

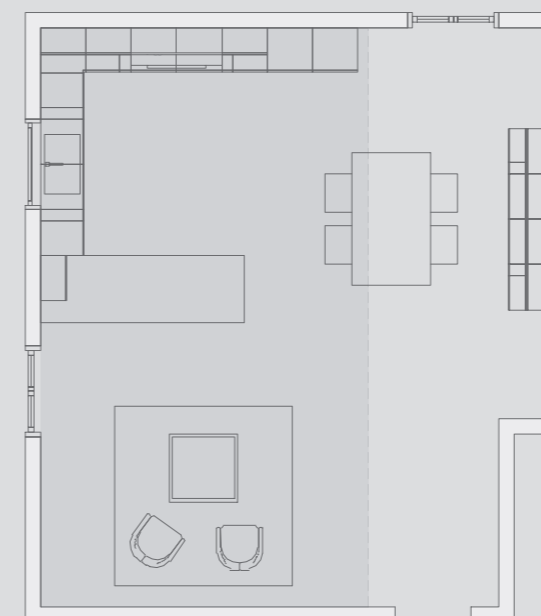
Composition réalisée en frêne laqué Cannella - éléments intérieurs de la vitrine en chêne à nœuds - plan de travail de l'épi en HPL blanc - plan de travail 630 Tiffany

Zusammenstellung in Esche lackiert Farbe Cannella - Innendetails des Glasschranks in Eiche astig - Thekenelement aus weißem HPL - Arbeitsplatte 630 Tiffany

Composición realizada en fresno lacado canela - pormenores del interior de la vitrina en roble con nudos - barra de desayunos en HPL blanco - encimera 630 Tiffany

Композиция выполнена из ясеня с лакировкой "cannella", внутренние детали витрины - из дуба с сучками, рабочий стол - из белого ламината, столешница - 630 Tiffany

Kompozycja wykonana z jesionu lakierowanego cynamon - wszystkie wnętrza witryny z dębu sękowego - lada z białego laminatu HPL - blat 630 Tiffany





In questa cucina la finitura frasino laccato cannella è in abbinamento alla finitura chiara del bancone in HPL bianco. Pensili e colonne caratterizzati dalla cornice-cappello.

In this kitchen Cannella lacquered ash is paired with the bright, white HPL finish of the breakfast bar. The distinctive feature of the wall and tall units is the crown moulding cornice.



A sinistra: cappa a parete in acciaio inox profondità 50 cm.  
Pensili con anta vetro battente, dotati di cerniere in acciaio nichelato opaco, con angolo di apertura di 100°.

Left: 50-cm deep wall hood in stainless steel.  
Wall units with hinged glass doors fitted with matt, nickel-effect steel, 100° hinges.



Frontali in frassino laccato cannella - bancone in HPL bianco - top in finitura 630 Tiffany

Fronts in Cannella lacquered ash - white HPL breakfast bar - 630 Tiffany worktop.





Vetrina con frontali frassino laccato cannella, schienali a vista in rovere nodato, ripiani in vetro temperato.

The glass display cabinet has Cannella lacquered ash fronts, visible back panels in knotted oak and tempered glass shelves.



# 10

## AMBIENTAZIONE SHABBY CHIC SHABBY CHIC SETTING

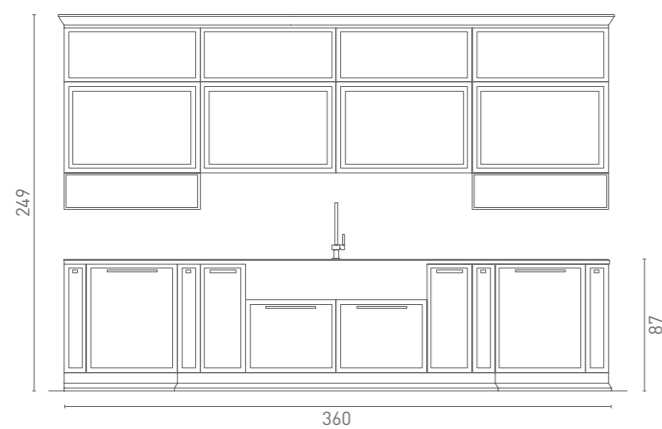
### Basi

Base units / Éléments bas / Unterschränke / Muebles bajos / Основания / Szafki dolne



### Basi e Pensili

Base and wall units / Éléments bas et Éléments hauts / Unterschränke und Hängeschränke / Muebles bajos y Colgantes / Основания и навесные шкафы / Szafki dolne i Szafki wiszące



## ESTETICA

Composizione realizzata in frassino laccato infinito - particolari interno vetrina in rovere nodato - bancone in rovere nodato - top in marmo light grey Emperador

Layout in Infinito lacquered ash, knotted oak trims inside the glass display cabinets, breakfast bar in knotted oak - Light Grey Emperador marble worktop.

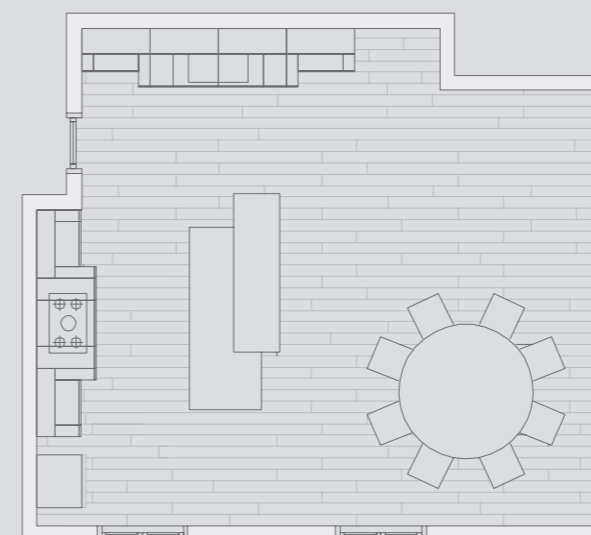
Composition réalisée en frêne laqué Infinito - éléments intérieurs de la vitrine en chêne à nœuds - plan snack en chêne à nœuds - plan de travail en marbre light grey Emperador

Zusammenstellung Esche lackiert Farbe Infinito - Innendetails des Glasschranks in Eiche astig - Thekenelement in Eiche astig - Arbeitsplatte aus Marmor Light Grey Emperador

Composición realizada en fresno lacado infinito - pormenores del interior de la vitrina en roble con nudos - barra de desayunos en roble con nudos - encimera de mármol light grey Emperador

Композиция выполнена из ясеня с лакировкой "infinito", внутренние детали витрины - из дуба с сучками, рабочий стол - из дуба с сучками, столешница - из мрамора light grey Emperador

Kompozycja wykonana z jesionu lakierowanego infinito - szczegóły wnętrza witryny z drewna sękowego - lada z drewna sękowego - blat w marmurze light







A sinistra: lavello sottotop in acciaio inox. Top in marmo light grey Emperador dal forte spessore. Sopra: isola con frontali frassino laccato infinito, bancone in rovere nodato, in appoggio sul top.

Left: undermount sink in stainless steel. Very thick Light Grey Emperador marble worktop. Top right: island with Infinito lacquered ash fronts and knotted oak breakfast bar sitting on the top.



Basi con struttura in pannello truciolare nobilitato sp. mm 18 classe E1, rivestito con resine melamminiche resistenti alle abrasioni. Frontali in frassino laccato infinito con fregi in rilievo in tinta.

Base units have 18-mm thick, class E1, chipboard carcasses faced with melamine resins resistant to abrasions. Fronts are in Infinito lacquered ash with matching-coloured, raised embellishments.

ESTETICA



**FINITURE**

FINISHES / FINITIONS / AUSFÜHRUNGEN / ACABADOS / ОТДЕЛКИ / WYKOŃCZENIA

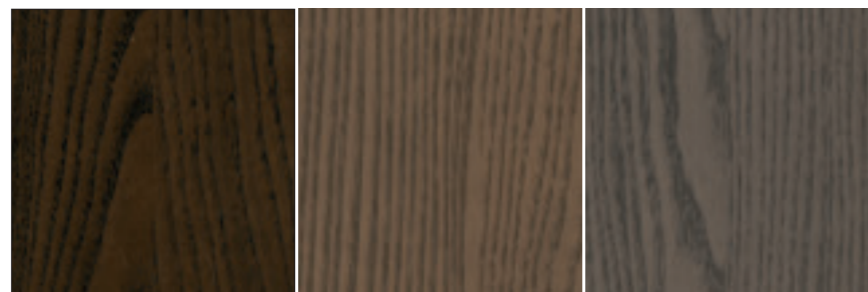
**ETICA - ESTETICA**

## FINITURE

FINISHES / FINITIONS / AUSFÜHRUNGEN / ACABADOS / ОТДЕЛКИ / WYKOŃCZENIA

### ESTETICA

frassino tinto  
stained ash  
frêne teinté  
Esche gebeizt  
fresno teñido  
окрашенный ясень  
jesion barwiony

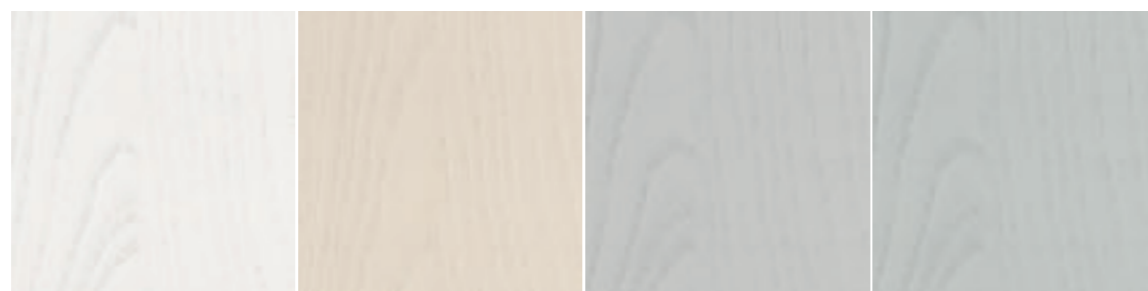


brown

mud

matter

frassino laccato  
lacquered ash  
frêne laqué  
Esche lackiert  
fresno lacado  
лакированный ясень  
jesion lakierowany

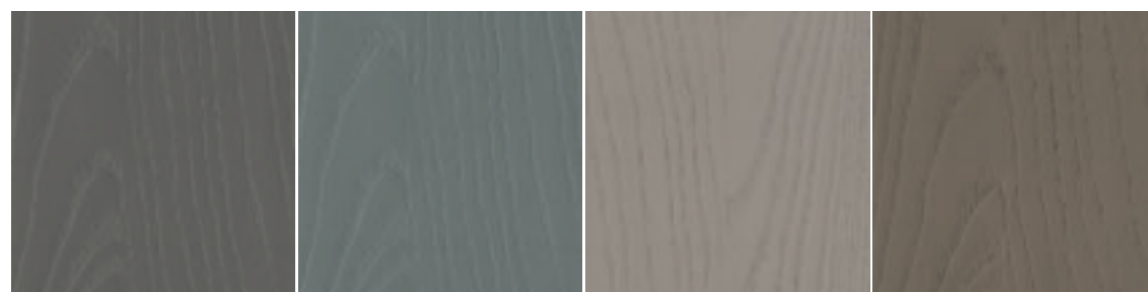


luce

sughero

infinito

nube



cupo

bosco

safari

cannella

### ETICA

laccato opaco  
matt lacquers  
laqué mat  
Matt lackiert  
lacado mate  
матовая лакировка  
lakierowany matowy

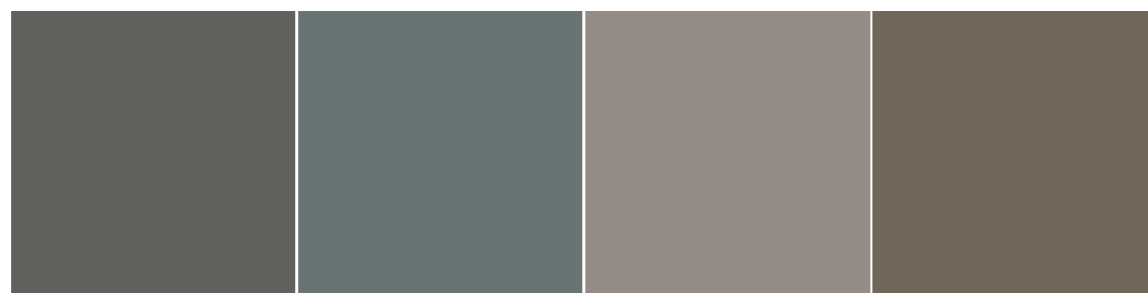


bianco perlato

cachemire

tela

vapore



grigio quarzo

peltro

smog

africa

### MANIGLIE

HANDLES / POIGNÉES /  
GRIFFE / TIRADORES /  
РУЧКИ / UCHWYTY



Art. 567



Art. 267



Art. 568



Art. 268



Art. 007

